

SIXTH EDITION

PROSTHETICS & ORTHOTICS



ST&G

USA CORPORATION

NORTH & SOUTH AMERICA

ST&G USA Corporation

ST&G USA Corporation is committed to devoting resources to new technologies that allow us to continue providing high quality products and excellent customer service. Located in Southern California, ST&G USA Corporation has served the medical community within the prosthetic and orthotic industry for over 20 years. ST&G USA Corporation is an ISO 13485 compliant company, and our quality standards for products, innovation, and services comply with international standards.

INNOVATION WITHOUT LIMITS

ST&G USA Corp. would like to extend a special thanks to our cover model, Guadalupe Gutierrez. Additionally, we would like to express our gratitude and give credit to Marlo Ortiz LOP(M) of Ortiz Internacional for the M.A.S.2.0/ INESS skin fit socket with Silicone HTV prepreg technology.



CONTENTS

PROSTHETICS

I. KNEE & HIP JOINT

Knee Joints	6
Hip Joints	25
Knee Rotators	26

II. PEDIATRIC SYSTEMS

Pediatric Knee Joints	28
Pediatric Components	30
Pediatric Foot	31
Replacement Parts	31

III. SUSPENSION SYSTEMS

Locks	33
Suspension Sleeve	40
Liners	42
Valves	48
Donning Sleeve	49

IV. COSMETIC COVERS

Cosmetic Covers	51
---------------------------	----

V. MODULAR COMPONENTS

Connectors	54-59, 71-77
Double Ended Adapters	60
Aluminum Tubes	63

Tube Clamp Assembly	64
Tube Clamps	66

Heavy Duty Systems

375lbs System	77
500lbs System	78

BK Kits

Ti, SS & Al	79
Heavy Duty BK Kits	80

VI. OSSEOINTEGRATION

Hermle	82
OTN Luci	85

VII. PROSTHETIC FEET

Feet	89
Tools	107
Torque Values	108
Shoe Size Conversion Chart	108

MATERIALS

I. MATERIALS

NSP™	110
ULTRA6 Carbon Braid	114
Carbon Braid	115

I. MATERIALS (cont.)

C-Form	116
R-Form	118
Uni-Grip	119
PVA Bags	119

ORTHOTICS

I. AFO ANKLE JOINTS

RIDGEFLEX Ankle Joint	121
Ankle Joints	123
In Step Carbon AFO	124

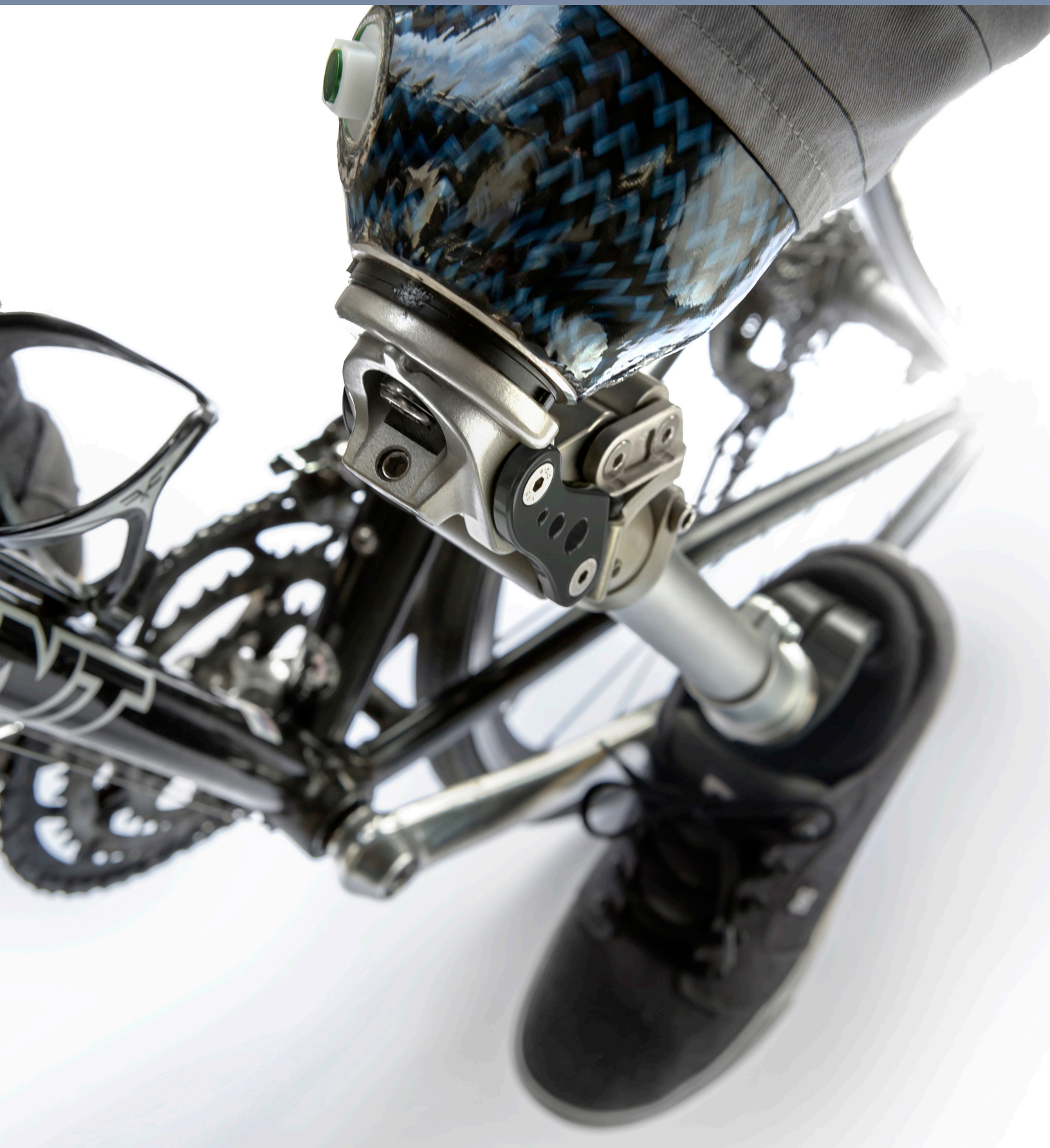
II. SPINAL ORTHOTICS

LSO	126
---------------	-----

III. TOOLS

Tools	130
-----------------	-----

KNEE & HIP JOINT



KNEE AND HIP JOINT

Knee Joints

SENSOR



2SR500

SENSOR — HYDRAULIC SWING AND STANCE
PHASE CONTROL KNEE

- Highly adjustable lightweight aluminum knees
- Wide range of adjustments to suit all stages of rehabilitation
- Weight activated Hydraulic swing and stance phase control
- Weight activated locking mode ensures maximum security and protection
- Stance yield function permits safe walking down stairs
- Adjustable flexion resistance yield, heel rise, and toe load
- Terminal impact dampener

PDAC approved HCPCS code(s)

- **L5828 + L5845 + L5848**
- To download PDAC Letter please visit our website at www.stngco.com

BILLING
LEVEL **K1** **K2** **K3** **K4**

*Per updated LCD
(Article ID A52496)*

P/N	2SR500 Female Adapter
Weight Limit	125kg / 275lbs
Build Height	276mm
Knee Flexion	120 Degrees
Product Weight	1141g
Material	Aluminum
Warranty	2 years

P/N	6PC508 Pyramid Adapter
Weight Limit	125kg
Product Weight	75g



Knee Joints

GEOLOCK

1336AP



1336KD



1336

GEOLOCK HYDRAULIC KNEE

The 1336 GeoLock Hydraulic Knee promotes solid stance control due to the effective mechanical geometric locking 4-Bar axis design, yet has smooth predictable swing phase transitioning.

- Geometrical Locking Mechanical Stance Stability Design
- Smooth predictable swing phase transitions
- Pyramid mount with 30mm distal tube clamp
- Easy access Flexion and Extension adjustments
- Magnesium Aluminum Alloy Construction

The 1336 knee is a very stable, yet easy walking knee. Obstacles are easily negotiable, and variable speed is easily adjustable. The hydraulic Flexion and Extension adjustments are located on the front of the knee for easy access to fine tune knee function. Compatible with many feet, such as the quick walking Endurance, smooth and dynamic Endurance Contour, or the smooth walking and good on uneven terrain Toe Flex.

PDAC approved HCPCS code(s)

- **L5814 + L5850**
- To download PDAC Letter please visit our website at www.stngco.com

BILLING LEVEL **K1** **K2** **K3** **K4**

*Per updated LCD
(Article ID A52496)*

P/N	1336AP	1336KD
Weight Limit	125kg / 275lbs	125kg / 275lbs
Build Height	155mm	155.5mm
Knee Center to Mid Dome	17mm	17.5mm
Clamp Torque	12Nm	12Nm
Knee Flexion	145 Degrees	145 Degrees
Product Weight	851g	825g
Material	Magnesium Aluminum Alloy	Magnesium Aluminum Alloy
Warranty	2 years	2 years

KNEE AND HIP JOINT

Knee Joints



SWAN 75
M0780



SWAN 100
M0786

M0780 / M0786

SWAN KNEE — HYDRAULIC STANCE FLEXION POLYCENTRIC KNEE

- Polycentric 5-bar knee design
- Adjustable hydraulic flexion resistance
- Low profile knee center and build-height
- Adjustable stance flexion resistance
- Adjustable extension assist
- Best suited to be used for moderate K3 activity level

PDAC approved HCPCS code(s)

- **L5814 + L5850**
- To download PDAC Letter please visit our website at www.stngco.com

BILLING
LEVEL **K1** **K2** **K3** **K4**

*Per updated LCD
(Article ID A52496)*

P/N	M0780 SWAN 75	M0786 SWAN 100
Weight Limit	75kg / 165lbs	125kg / 275lbs
Build Height	164mm	170mm
Knee Center to Mid Dome	14.5mm	14mm
Knee Flexion	150 Degrees	150 Degrees
Product Weight	670g	840g
Material	Aluminum	Aluminum
Warranty	2 year	2 year



Knee Joints



SWAN 75
LM0780

M0782 / M0787

SWAN KNEE — HYDRAULIC STANCE FLEXION POLYCENTRIC KNEE WITH MANUAL LOCK

- Polycentric 5-bar knee design
- Manual guide lock mechanism provides added security, activated with knee hyperextended
- Adjustable hydraulic flexion resistance
- Adjustable stance flexion resistance
- Adjustable extension assist
- Low profile knee center and build-height
- Provides secure safety when standing for long periods of time, tight confines, or uneven ground
- Best suited to be used for moderate K3 activity level

PDAC approved HCPCS code(s)

- **L5814 + L5850 + L5925**
- To download PDAC Letter please visit our website at www.stngco.com

BILLING
LEVEL **K1** **K2** **K3** **K4**

*Per updated LCD
(Article ID A52496)*

P/N	LM0780	LM0786
Weight Limit	75kg / 165lbs	125kg / 275lbs
Product Weight	675g	940g
Warranty	2 year	2 year



SWAN 100
LM0786



Stance Flexion
Adjustment Screw

KNEE AND HIP JOINT

Knee Joints



M0790 MCK

HYDRAULIC MOTION CONTROL KNEE

- Knee tilting position determines switch into swing or stance modes
- 4 Manually activated modes available (Cycling, Walk, High Yield, Lock)
- Stance Control: Adjustable Hydraulic Yielding
- Swing Control: Adjustable Hydraulic Flexion and Extension
- Easy Alignment
- Proximal and distal pyramid mount
- Removable Protective Kneecap

PDAC approved HCPCS code(s)

- **L5828 + L5845 + L5850 + L5925**
- To download PDAC Letter please visit our website at www.stngco.com

BILLING LEVEL **K1** **K2** **K3** **K4**

*Per updated LCD
(Article ID A52496)*

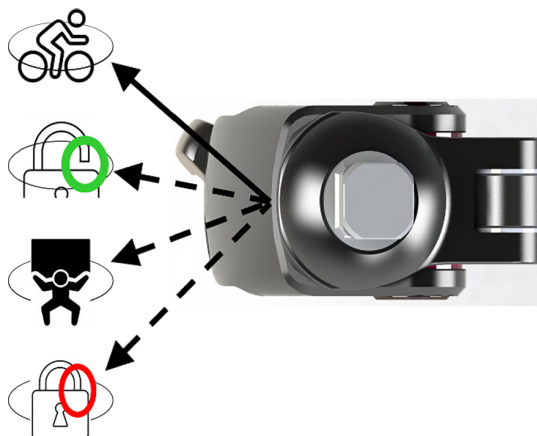
P/N	M0790
Weight Limit	100kg / 220lbs
Build Height	179mm
Knee Center to Mid Dome	19mm
Knee Flexion	150 Degrees
Product Weight	940g
Material	Aluminum
Warranty	2 years

Cycling mode
(Clinician to remove safety
lock out screw)

Walk mode

Constant yielding mode

Lock mode





Knee Joints



M0703

DOLPHIN KNEE – HYDRAULIC SINGLE AXIS KNEE

- Hydraulic cylinder giving the ease of pre-swing performance influences the smoothness of the gait
- Extremely stable knee axle position
- Very light weight, slim and compact
- Independent flexion and extension resistance adjustment
- Extension assist
- Best suited to be used for moderate K3 activity level

PDAC approved HCPCS code(s)

- **L5828**
- To download PDAC Letter please visit our website at www.stngco.com

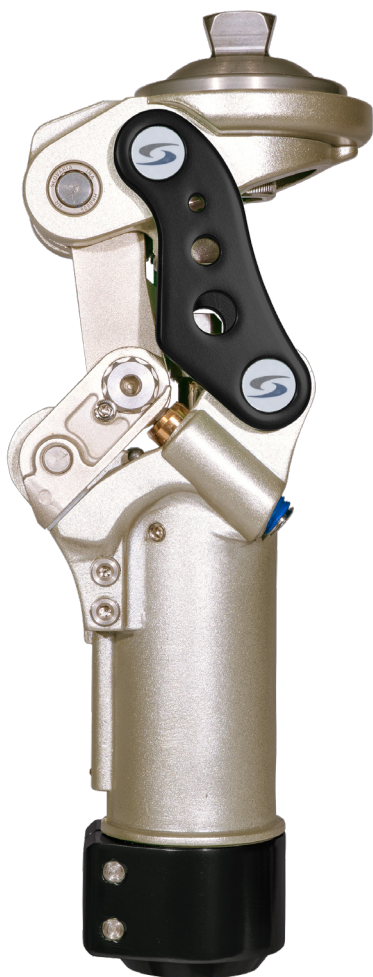
BILLING LEVEL **K1** **K2** **K3** **K4**

P/N	M0703
Weight Limit	100kg / 220 lbs
Build Height	142mm
Knee Center to Mid Dome	16mm
Knee Flexion	135 Degrees
Product Weight	495g
Material	Aluminum
Warranty	2 years

Torque Value	Torque (Nm)	Hex (mm)
M5 Cap Screw	8 Nm	4mm wrench

KNEE AND HIP JOINT

Knee Joints



Lotus Adapter

1323

STANCE FLEXION 5-BAR PNEUMATIC KNEE

- Pneumatic cylinder with independent flexion - extension adjustment for swing phase
- Extensive alignment adjusting abilities for a smooth and natural gait pattern
- Polycentric knee with stance flexion control for maximum safety during stance
- Practitioner adjustable from high to low stability stance flexion
- Proximal attachment has 2mm of A/P, M/L slide and rotation adjustment
- Up to 12 degrees of stance flexion
- Best suited to be used for low to moderate K3 activity level

PDAC approved HCPCS code(s)

- **L5840 + L5845 + L5850**
- To download PDAC Letter please visit our website at www.stngco.com

BILLING LEVEL **K1** **K2** **K3** **K4**

*Per updated LCD
(Article ID A52496)*

P/N	1323AP Pyramid Adapter	1323AL Lotus Adapter
Weight Limit	125kg / 275lbs	125kg / 275lbs
Build Height	177.5mm	183.8mm
Knee Center to Mid Dome	24mm	30.3mm
Knee Flexion	135 Degrees	135 Degrees
Product Weight	976g	998g
Material	Aluminum	Aluminum
Warranty	2 years	2 years

REPLACEMENT PARTS

P/N	Description
PA13	Pyramid Adapter for : L1321, 1321,1322,1323,1324, L1324 and 1326
LA13	Lotus Adapter for : L1321, 1321,1322,1323,1324, L1324 and 1326

Torque Value	Torque (Nm)	Hex (mm)
M6 Cap Screw (Tube Clamp Torque Setting)	12 Nm	5mm wrench
M10 Bolt (Pyramid Center Bolt)	24 Nm	8mm wrench



Knee Joints



1322

POLYCENTRIC PNEUMATIC 4-BAR KNEE

- Polycentric knee joint with pneumatic swing control
- Independent flexion and extension resistance adjustment
- Built-in bearings which allow for ultra smooth walking movement
- Frame construction made of superlight aluminum alloy
- Proximal attachment has 2mm of A/P, M/L slide and rotation adjustment
- Adjustable extension assist
- Best suited to be used for low to moderate K3 activity level

PDAC approved HCPCS code(s)

- **L5840 + L5850**
- To download PDAC Letter please visit our website at www.stngco.com

BILLING LEVEL **K1** **K2** **K3** **K4**

*Per updated LCD
(Article ID A52496)*

P/N	1322AP Pyramid Adapter	1322AL Lotus Adapter
Weight Limit	125kg / 275lbs	125kg / 275lbs
Build Height	172mm	178.3mm
Knee Center to Mid Dome	22.7mm	29mm
Knee Flexion	135 Degrees	135 Degrees
Product Weight	875g	897g
Material	Aluminum	Aluminum
Warranty	2 years	2 years



Lotus Adapter

REPLACEMENT PARTS

P/N	Description
PA13	Pyramid Adapter for : L1321, 1321,1322,1323,1324, L1324 and 1326
LA13	Lotus Adapter for : L1321, 1321,1322,1323,1324, L1324 and 1326

Torque Value	Torque (Nm)	Hex (mm)
M6 Cap Screw (Tube Clamp Torque Setting)	12 Nm	5mm wrench
M10 Bolt (Pyramid Center Bolt)	24 Nm	8mm wrench

KNEE AND HIP JOINT

Knee Joints



L1322

POLYCENTRIC PNEUMATIC 4-BAR KNEE WITH MANUAL LOCK

- Polycentric knee joint with pneumatic swing control
- Independent flexion and extension resistance adjustment
- Built-in bearings which allow for ultra smooth walking movement
- Frame construction made of superlight aluminum alloy
- Manual glide lock mechanism provides added security when needed only with knee hyperextended
- Provides secure safety when standing for long periods of time, tight confines, or uneven ground
- Best suited to be used for low to moderate K3 activity level

PDAC approved HCPCS code(s)

- **L5840 + L5850 + L5925**
- To download PDAC Letter please visit our website at www.stngco.com

BILLING LEVEL **K1** **K2** **K3** **K4**

*Per updated LCD
(Article ID A52496)*

P/N	L1322
Weight Limit	125kg / 275lbs
Build Height	169.3mm
Knee Center to Mid Dome	28mm
Knee Flexion	135 Degrees
Product Weight	875g
Material	Aluminum
Warranty	2 years

Torque Value	Torque (Nm)	Hex (mm)
M6 Cap Screw (Tube Clamp Torque Setting)	12 Nm	5mm wrench



Knee Joints



1335

PNEUMATIC 4-BAR KNEE

The 1335AP / 1335KD Pneumatic 4-Bar Knee promotes stable stance control and has smooth swing phase transitioning.

Benefits:

- Treatment of all amputation levels
- Flexion and extension damping can be easily adjusted independently of each other
- High stance phase polycentric four-axis joint stability
- Lightweight aluminium design

The 1335 Polycentric Prosthetic Knee Joint with pneumatic swing phase control offers reliable stance phase security for users with moderate activity levels.

Adjustable Swing Phase Flexion and Extension to accommodate a range of walking speeds.

PDAC approved HCPCS code(s)

- **L5840 + L5850**
- To download PDAC Letter please visit our website at www.stngco.com

BILLING LEVEL **K1** **K2** **K3** **K4**

*Per updated LCD
(Article ID A52496)*



P/N	1335AP	1335KD
Weight Limit	125kg / 275lbs	125kg / 275lbs
Build Height	191mm	183.5mm
Knee Center to Mid Dome	16mm	15.5mm
Clamp Torque	12Nm	12Nm
Knee Flexion	150 Degrees	150 Degrees
Product Weight	898g	852g
Material	Aluminum Alloy	Aluminum Alloy
Warranty	2 years	2 years

KNEE AND HIP JOINT

Knee Joints



1324

STANCE FLEXION 5-BAR MECHANICAL KNEE

- Very stable 5-bar knee with up to 12 degrees of stance flexion for maximum safety during stance
- Constant friction adjustment for swing phase
- Practitioner adjustable from high to low stability stance flexion
- Proximal attachment has 2mm of A/P, M/L slide and rotation adjustment
- The frame construction is made of superlight aluminum alloy and the 5-bar linkage is made of aircraft grade alloy
- Adjustable extension assist
- Best suited for K2 Level

PDAC approved HCPCS code(s)

- **L5611 + L5845 + L5850**
- To download PDAC Letter please visit our website at www.stngco.com

BILLING LEVEL **K1** **K2** **K3** **K4**

P/N	1324AP Pyramid Adapter	1324AL Lotus Adapter
Weight Limit	125kg / 275lbs	125kg / 275lbs
Build Height	112mm	118.3mm
Knee Center to Mid Dome	23.5mm	29.8mm
Knee Flexion	135 Degrees	135 Degrees
Product Weight	789g	801g
Material	Aluminum	Aluminum
Warranty	2 years	2 years



Lotus Adapter

REPLACEMENT PARTS

P/N	Description
PA13	Pyramid Adapter for : L1321, 1321,1322,1323,1324, L1324 and 1326
LA13	Lotus Adapter for : L1321, 1321,1322,1323,1324, L1324 and 1326

Torque Value	Torque (Nm)	Hex (mm)
M6 Cap Screw (Tube Clamp Torque Setting)	12 Nm	5mm wrench
M10 Bolt (Pyramid Center Bolt)	24 Nm	8mm wrench



Knee Joints



L1324

STANCE FLEXION 5-BAR MECHANICAL KNEE WITH MANUAL LOCK

- Very stable 5-bar knee with up to 12 degrees of stance flexion for maximum safety during stance
- Constant friction adjustment for swing phase
- Practitioner adjustable from high to low stability stance flexion
- Proximal attachment has 2mm of A/P, M/L slide and rotation adjustment
- Lock mechanism can also be disabled at a later time to provide free swing knee function
- The frame construction is made of superlight aluminum alloy and the 5-bar linkage is made of aircraft grade alloy
- Adjustable extension assist
- Best suited to be used for K1/K2 Level

PDAC approved HCPCS code(s)

- **L5611 + L5845 + L5850 + L5925**
- To download PDAC Letter please visit our website at www.stngco.com

BILLING LEVEL **K1** **K2** **K3** **K4**

P/N	L1324AP Pyramid Adapter	L1324AL Lotus Adapter
Weight Limit	125kg / 275lbs	125kg / 275lbs
Build Height	112mm	118.3mm
Knee Center to Mid Dome	23.5mm	29.8mm
Knee Flexion	135 Degrees	135 Degrees
Product Weight	848g	861g
Material	Aluminum	Aluminum
Warranty	2 years	2 years



Lotus Adapter

REPLACEMENT PARTS

P/N	Description
PA13	Pyramid Adapter for : L1321, 1321,1322,1323,1324, L1324 and 1326
LA13	Lotus Adapter for : L1321, 1321,1322,1323,1324, L1324 and 1326
LY13	Lanyard for Manual Locking Knee

Torque Value	Torque (Nm)	Hex (mm)
M6 Cap Screw (Tube Clamp Torque Setting)	12 Nm	5mm wrench
M10 Bolt (Pyramid Center Bolt)	24 Nm	8mm wrench

KNEE AND HIP JOINT

Knee Joints



1321

POLYCENTRIC 4-BAR KNEE

- Polycentric knee
- Constant friction swing phase control
- Frame construction is made of superlight aluminum alloy
- 4-bar linkage is made of aircraft alloy (AA7075)
- Proximal attachment has 2mm of A/P, M/L slide and rotation adjustment
- Adjustable extension assist
- Best suited to be used for K2 activity level

PDAC approved HCPCS code(s)

- **L5611 + L5850**
- To download PDAC Letter please visit our website at www.stngco.com

BILLING LEVEL **K1** **K2** K3 K4

P/N	1321AP Pyramid Adapter	1321AL Lotus Adapter
Weight Limit	125kg / 275lbs	125kg / 275lbs
Build Height	108mm	114.3mm
Knee Center to Mid Dome	23mm	29.3mm
Product Weight	651g	672g
Material	Aluminum	Aluminum
Warranty	2 years	2 years



Lotus Adapter

REPLACEMENT PARTS

P/N	Description
PA13	Pyramid Adapter for : L1321, 1321,1322,1323,1324, L1324 and 1326
LA13	Lotus Adapter for : L1321, 1321,1322,1323,1324, L1324 and 1326

Torque Value	Torque (Nm)	Hex (mm)
M6 Cap Screw (Tube Clamp Torque Setting)	12 Nm	5mm wrench
M10 Bolt (Pyramid Center Bolt)	24 Nm	8mm wrench



Knee Joints



L1321

POLYCENTRIC 4-BAR MANUAL LOCKING KNEE

- Manual locking polycentric knee
- Lanyard lock mechanism can be disabled at a later time to convert to a non-locking free swing knee
- Constant friction swing phase control
- Provides a high degree of safety
- Frame construction is made of superlight aluminum alloy
- 4-bar linkage is made of aircraft alloy (AA7075)
- Proximal attachment has 2mm of A/P, M/L slide and rotation adjustment
- Adjustable extension assist
- Best suited to be used for K1/K2 activity level

PDAC approved HCPCS code(s)

- **L5611 + L5850 + L5925**
- To download PDAC Letter please visit our website at www.stngco.com

BILLING LEVEL **K1** **K2** **K3** **K4**

P/N	L1321AP Pyramid Adapter	L1321AL Lotus Adapter
Weight Limit	125kg / 275lbs	125kg / 275lbs
Build Height	108mm	114.3mm
Knee Center to Mid Dome	23mm	29.3mm
Product Weight	651g	672g
Material	Aluminum	Aluminum
Warranty	2 years	2 years



Lotus Adapter



Lanyard for Manual Locking Knee

REPLACEMENT PARTS

P/N	Description
PA13	Pyramid Adapter for : L1321, 1321,1322,1323,1324, L1324 and 1326
LA13	Lotus Adapter for : L1321, 1321,1322,1323,1324, L1324 and 1326
LY13	Lanyard for Manual Locking Knee

Torque Value	Torque (Nm)	Hex (mm)
M6 Cap Screw (Tube Clamp Torque Setting)	12 Nm	5mm wrench
M10 Bolt (Pyramid Center Bolt)	24 Nm	8mm wrench

KNEE AND HIP JOINT

Knee Joints



1326

4-BAR KNEE FOR AK AND KD

- Polycentric 4-bar knee
- Constant friction swing phase control
- Best suited for low activity level
- Provides a high degree of safety
- Frame construction is made of superlight aluminum alloy
- Proximal attachment has 2mm of A/P, M/L slide and rotation adjustment
- Adjustable extension assist
- Best suited to be used for K2 activity level

PDAC approved HCPCS code(s)

- **L5611 + L5850**
- To download PDAC Letter please visit our website at www.stngco.com

BILLING LEVEL **K1** **K2** K3 K4

P/N	1326AP Pyramid Adapter	1326AL Lotus Adapter
Weight Limit	100kg / 220lbs	100kg / 220lbs
Build Height	87.3mm	93.6mm
Knee Center to Mid Dome	23mm	29.3mm
Product Weight	532g	553g
Material	Aluminum	Aluminum
Warranty	2 years	2 years



Lotus Adapter

REPLACEMENT PARTS

P/N	Description
PA13	Pyramid Adapter for : L1321, 1321,1322,1323,1324, L1324 and 1326
LA13	Lotus Adapter for : L1321, 1321,1322,1323,1324, L1324 and 1326

Torque Value	Torque (Nm)	Hex (mm)
M6 Cap Screw (Tube Clamp Torque Setting)	12 Nm	5mm wrench
M10 Bolt (Pyramid Center Bolt)	24 Nm	8mm wrench



Knee Joints



1311

WEIGHT ACTIVATED BRAKE KNEE

- Single axis knee
- Stance phase friction brake
- Activated by weight bearing and designed for moderate functional demands
- Also suitable for amputees with lower functional levels who desire to avoid using a manual locking knee

PDAC approved HCPCS code(s)

- **L5812 + L5850**
- To download PDAC Letter please visit our website at www.stngco.com

BILLING LEVEL **K1** **K2** **K3** **K4**

L1311A

WEIGHT ACTIVATED BRAKE KNEE WITH MANUAL LOCK

- Light single axis knee
- Weight activated brake function with manual lock
- Brake feature provides a controlled flexion and extension profile
- Locking function for a high degree of safety for initial standing and gait exercises
- Lock Mechanism can be disabled depending on patient's progress
- Adjustable Extension Assist

PDAC approved HCPCS code(s)

- **L5812 + L5850 + L5925**
- To download PDAC Letter please visit our website at www.stngco.com

BILLING LEVEL **K1** **K2** **K3** **K4**



P/N	1311S	L1311A
Weight Limit	100kg / 220lbs	125kg / 275lbs
Build Height	48mm	65mm
Knee Center to Mid Dome	21.5mm	26mm
Knee Flexion	150 Degrees	145 Degrees
Product Weight	532g	495g
Material	Stainless Steel	Aluminum
Warranty	1 year	2 year

REPLACEMENT PARTS

P/N Description

1311-1 Extension Assist Kit and Cable for P/N 1311

KNEE AND HIP JOINT

Knee Joints



1313A

MANUAL LOCKING KNEE – TYPE A

- Single axis light weight manual locking knee
- Designated for beginner and elderly with low activity level
- Fully machined 7075 aircraft grade aluminum alloy

PDAC approved HCPCS code(s)

- **L5811**
- To download PDAC Letter please visit our website at www.stngco.com

BILLING LEVEL **K1** **K2** **K3** **K4**

P/N	1313A
Weight Limit	90kg / 198lbs
Build Height	43mm
Knee Center to Mid Dome	19mm
Knee Flexion	140 Degrees
Product Weight	298g
Material	Aluminum
Warranty	1 year



1313A-N

MANUAL LOCKING KNEE / TYPE B

- Single axis light weight manual locking knee
- Designed for beginner and elderly with low activity level
- Fully machined 7075 aircraft grade aluminum alloy

PDAC approved HCPCS code(s)

- **L5810**
- To download PDAC Letter please visit our website at www.stngco.com

BILLING LEVEL **K1** **K2** **K3** **K4**

P/N	1313A-N
Weight Limit	100kg / 220lbs
Build Height	43.5mm
Knee Center to Mid Dome	19mm
Product Weight	281g
Material	Aluminum
Warranty	2 years

REPLACEMENT PARTS FOR 1313A / 1313A-N

P/N Description

LY13 Lanyard for Manual Locking Knee

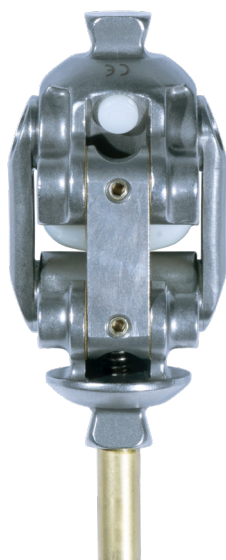
Torque Value	Torque (Nm)	Hex (mm)
M6 Cap Screw	12 Nm	5mm wrench



Lanyard for Manual Locking Knee



Knee Joints



1312

MECHANICAL 4-BAR KNEE

- Polycentric knee
- Frame construction is made of titanium or stainless steel
- Constant friction swing control
- Adjustable extension assist
- Adjustable 4-bar stability

Suggested L code(s)

- **L5818 + L5850**

Note: The above codes are suggested codes and accurate coding lies solely with the provider treating the patient.

BILLING LEVEL **K1** **K2** **K3** **K4**

P/N	1313A
Weight Limit	125kg / 275lbs
Build Height	83mm
Knee Center to Mid Dome	16mm
Knee Flexion	110 Degrees
Product Weight	719g
Material	Stainless Steel
Warranty	1 year

KNEE AND HIP JOINT

Knee Joints



1318

SINGLE AXIS KNEE WITH MANUAL LOCK

- Single axis knee joint with adjustable manual lock
- Lower actively level
- High stance phase stability, minimal swing phase control

PDAC approved HCPCS code(s)

For 1318S - Stainless Steel

- **L5810 + L5850**
- To download PDAC Letter please visit our website at www.stngco.com

BILLING LEVEL **K1** **K2** **K3** **K4**

P/N	1318S
Weight Limit	100kg / 220lbs
Build Height	82mm
Knee Center to Mid Dome	24mm
Knee Flexion	120 Degrees
Product Weight	590g
Material	Stainless Steel
Warranty	1 year



Lanyard for Manual Locking Knee

REPLACEMENT PARTS

P/N Description

LY13 Lanyard for Manual Locking Knee



Hip Joints



1330

HIP JOINT WITH INTERNAL EXTENSION ASSIST

- Internal extension assist device which can be adjusted to patient's needs
- Joint can also be adjusted for hip flexion as well as rotation

P/N	1330S
Weight Limit	100kg / 220lbs
Hip Flexion	130 Degrees
Product Weight	850g
Material	Stainless Steel
Warranty	1 year



1332

HIP JOINT WITH 4-BAR LINKAGE

- Polycentric design provides high security
- Best suited for hip disarticulation with high need of safety
- Super light weight aluminum alloy construction with 4-bar linkage
- Adjustable extension assist

P/N	1332A
Weight Limit	100kg / 220lbs
Hip Flexion	125 Degrees
Product Weight	717g
Material	Aluminum
Warranty	2 years

Torque Value	Torque (Nm)	Hex (mm)
M6 Cap Screw (Tube Clamp Torque Setting)	12 Nm	5mm wrench

KNEE AND HIP JOINT

Knee Rotators



1423

KNEE ROTATOR WITH PYRAMID

- Lightweight and durable construction: Made of Lightweight Titanium Alloy and Durable Stainless Steel
- Light button actuation: Easy to operate the button, even for those with weak finger dexterity, partial fingers, or upper extremity users
- Designed for short Trans-Femoral or Hip Disarticulation levels: Works in conjunction with a Pyramid Receiver adapter or socket adapter, to a pyramid on the knee joint. Can be used with a pyramid receiver offset adapter
- Good option for Osseo-integration: Compatible with Lucy Adapter
- High corrosion resistance: Titanium and Stainless-Steel help to suppress internal corrosion caused by moisture such as sweat
- 100 kilogram / 220 pound weight limit
- Not for activities with water submersion
- Secure button housing: Built in fairing helps to prevent accidental bumping of the release button

Suggested L code(s)

- L5926



1425

KNEE ROTATOR WITH THREADS

- Lightweight and durable construction: Made of Lightweight Titanium Alloy and Durable Stainless Steel
- Light button actuation: Easy to operate the button, even for those with weak finger dexterity, partial fingers, or upper extremity users
- Designed for long Trans-Femoral levels: Works in conjunction with a threaded 4-hole socket adapter, to a pyramid on the knee joint. Possible to use with an offset plate
- Good option for Osseo-integration: Compatible with a Hermle Adapter using 4-hole threaded base
- High corrosion resistance: Titanium and Stainless-Steel help to suppress internal corrosion caused by moisture such as sweat
- 100 kilogram / 220 pound weight limit
- Not for activities with water submersion
- Secure button housing: Built in fairing helps to prevent accidental bumping of the release button

Suggested L code(s)

- L5926

P/N	1423	1425
Product Weight	170g	160g
Material	Titanium	Titanium
Proximal Connection	Pyramid	36mm Threaded
Distal Connection	Pyramid	Pyramid
Build Height	26mm	29mm
Rotation Range	360 Degrees	360 Degrees
Warranty	2	2

PEDIATRIC SYSTEMS



Pediatric Knee Joints



AK Adapter



KD Adapter



Lanyard for Manual Locking Knee

P313 AP/AL (LOCKING)

PEDIATRIC 4-BAR KNEE (MANUAL LOCKING OPTION)

- Adjustable spring extension assist
- Pediatric Polycentric 4-Bar Knee
- Light weight
- Manual lock feature provides a high degree of safety
- Lanyard lock mechanism can be disabled at a later time to convert to a non-locking free swing knee
- Optional Adapters: Pyramid (AK) and 3-prong adapter (KD)

Suggested HCPCS code(s)

- **L5611 + L5925 + L5818* + L5850*** (*Product Code up for Review)
- Pending PDAC approval. Visit our website at www.stngco.com for updates.

BILLING LEVEL **K1** **K2** **K3** **K4**

P/N	P313AP Pyramid Adapter	P313AL KD Adapter
Weight Limit	55kg / 121lbs	55kg / 121lbs
Build Height	83mm	82mm
Knee Center to Top	20mm	19mm
Product Weight	422g	488g
Material	Aluminum	Aluminum
Warranty	1 year	1 year

REPLACEMENT PARTS

P/N	Description
PA31	AK Adapter for P/N P313A/P317A
KA31	KD Adapter for P/N P313A/P317A
LY13	Lanyard for Manual Locking Knee

Torque Value	Torque (Nm)	Hex (mm)
M6 Cap Screw	10 Nm	5mm wrench



Pediatric Knee Joints



AK Adapter



KD Adapter

P317

PEDIATRIC 4-BAR KNEE FOR AK AND KD

- Pediatric Polycentric 4-Bar Knee
- Light weight
- Provides a high degree of safety
- Optional Adapters: Pyramid (AK) and 3-prong adapter (KD)

Suggested HCPCS code(s)

- **L5611* + L5850*** (*Product Code up for Review)
- Pending PDAC approval. Visit our website at www.stngco.com for updates.

BILLING LEVEL **K1** **K2** **K3** **K4**

P/N	P317AP Pyramid Adapter	P317AL KD Adapter
Weight Limit	55kg / 121lbs	55kg / 121lbs
Build Height	83mm	82mm
Knee Center to Top	20mm	19mm
Product Weight	401g	454g
Material	Aluminum	Aluminum
Warranty	1 year	1 year

REPLACEMENT PARTS

P/N	Description
PA31	AK Adapter for P/N P313A/P317A
KA31	KD Adapter for P/N P313A/P317A

Torque Value	Torque (Nm)	Hex (mm)
M6 Cap Screw	10 Nm	5mm wrench

PEDIATRIC SYSTEMS

Pediatric Components



P220

PEDIATRIC 4-EAR CONNECTOR

P/N	Material	Weight Limit	Warranty
P220A	Aluminum/Stainless Steel	55kg / 121lbs	1 year



P211

PEDIATRIC TUBE CLAMP ASSEMBLY

P/N	Material	Weight Limit	Warranty
P211A	Aluminum	55kg / 121lbs	1 year

Torque Value	Torque (Nm)	Hex (mm)
M6 Set Screw (Alignment Adjustment Screw)	6 Nm	3mm wrench



P212

PEDIATRIC TUBE CLAMP

P/N	Material	Weight Limit	Warranty
P212A	Aluminum	55kg / 121lbs	1 year

Torque Value	Torque (Nm)	Hex (mm)
M6 Set Screw (Alignment Adjustment Screw)	6 Nm	3mm wrench
M5 Cap Screw	4 Nm	4mm wrench



P242

22MM TUBE CLAMP WITH STANDARD PYRAMID RECEIVER, SS

P/N	Material	Weight Limit	Warranty
P242S	Stainless Steel	55 kg/ 122 lbs	1 year

Torque Value	Torque (Nm)	Hex (mm)
Alignment Adjustment Set Screw	10 Nm	3mm wrench
Pylon Clamp Screw	4 Nm	4mm wrench



Pediatric Foot



1105

PEDIATRIC SACH FOOT

This foot is designed for use with a modular adapter P231A.

- **LCode: L5970**

Warranty: 1 Year

P/N	Product Description	Weight Limit
1105	1105 =12 - 17 Left / Right	35kg / 77lbs
1105	1105 =19 Left / Right	45kg / 99lbs

Note: Approximate weight and build height taken on size 19



P231

PEDIATRIC SACH FOOT ADAPTER

P/N	Material	Weight Limit	Warranty
P231A	Aluminum/Stainless Steel	55kg / 121lbs	1 year

Torque Value	Torque (Nm)	Hex (mm)
M8 Cap Screw (Attachment Bolt)	20 Nm	6mm wrench

Replacement Parts



PA31

AK ADAPTER FOR PEDIATRIC KNEE

P/N	Description
PA31	AK Adapter for Pediatric Knee



KA31

KD ADAPTER FOR PEDIATRIC KNEE

P/N	Description
KA31	KD Adapter for Pediatric Knee

SUSPENSION SYSTEMS





Locks



3180M & 3181MP MAGLOCK 2.0 & 2.0 PLUS

GO MAGNETIC

The MAGLOCK & MAGLOCK PLUS have been designed to ease the frustration of donning a pin lock liner for patients K1 to K3. The MAGLOCK 2.0 achieves up to 60 lbs of suspension strength while the MAGLOCK 2.0 Plus achieves up to 90 lbs. The large distal target allows the patient to be 10 degrees off center and still achieve suspension.

Neither version requires any maintenance, no charging and offers a fail safe way to turn on and off the magnetic system. The ultimate product for patients who have dexterity issues, issues with pin alignment, requires a caregiver or looking for a suspension system that offers an easier option for suspension.

Warranty: 1 year



P/N	Product Description	Weight Limit	Product Weight	Build Height	Suspension Strength
3180-M	Mechanical Maglock	136kg / 300lbs	278g / 0.6lbs	2.2cm / 0.87in	60lbs
3181-MP	Mechanical Maglock 2.0 Plus	136kg / 300lbs	312g / 0.69lbs	2.72cm / 1.07in	90lbs

REPLACEMENT PARTS	
P/N	Description
DSTC	Distal Cap Converter for all pin liners

REPLACEMENT PARTS	
P/N	Description
3180-1M	Dummy for MECHANICAL MAGLOCK
3181-1M	Dummy for MECHANICAL MAGLOCK 2.0 PLUS

DISTAL CAP Converter for all pin liners

Cap converter with 10 mm thread for all pin liners. The distal cap converter is required for use with other liners in order to be compatible with the MAGLOCK.

Fabrication Dummy for MAGLOCK & MAGLOCK PLUS

Comes with different sized silicon rings for casting over a MAGLiner or when using the Distal Cap converter for a locking liner. These rings provide the perfect spacing and alignment of the MAGLOCK. The Fabrication Dummy comes with four silicone rings.



Locks



3190T EZ ADAPT LOCK

Ultra Low Profile Modular Lock

EZ ADAPT components allow you to fabricate a low profile socket much easier, providing modular versatility to rotate as needed without any hassle.

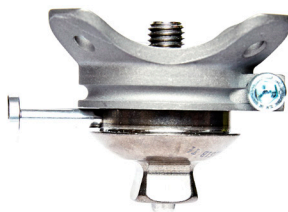
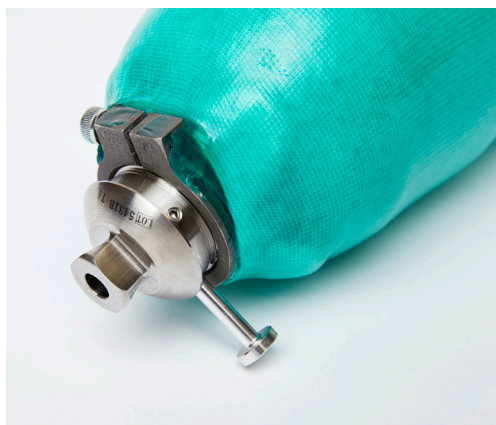
The 3190T EZLOCK is a Titanium adapter with a male pyramid on one end and threaded pylon on the opposite end. This titanium lock with serrated pin type attachment gives the ultimate advantage in strength and versatility when space is limited. The EZLOCK is a light space saving device which also provides the benefit of rotation. The push button can also be cut to length if needed.

The 3190T EZLOCK is designed to work in conjunction with ST&G 3 & 4-prong rotating bases 1421S, 1221S, 1223T, 1214T. Please use laminating instruction for our bases.

Set screws should be torqued and thread locker applied after alignment is complete.

EZLOCK Includes 1 medium pin and pin guide dummy.

Warranty: 1 year



Pin for EZ Adapt Lock



EZ Lock with 4 Holes Rotating Base

P/N	Product Description	Weight Limit	Product Weight	Build Height
3190T	Low Profile Lock	136kg / 300lbs	92g	25mm

REPLACEMENT PARTS	
P/N	Description
3140-MP	Medium pin for EZ Lock 3190, Pin length 1.5in
3140-LP	Long pin for EZ Lock 3190, Pin length 2in

Please visit www.stngco.com
for fabrication instructions



Locks

①



②



Side View



Offset View



Pin for Shift Lock



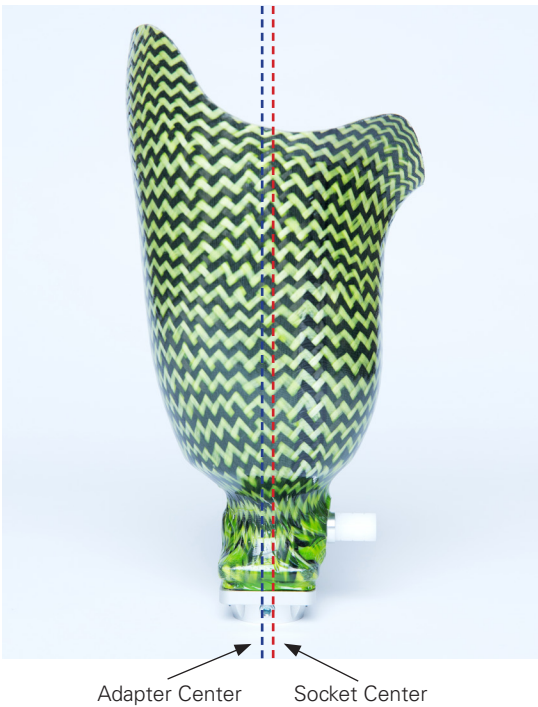
Please visit www.stngco.com for fabrication instructions

3170
SHIFT LOCK

Light Weight Heavy Duty Offset Shuttle Lock

- Simply shift the base in fabrication to achieve any offset
- Light weight
- Stainless steel lined pin guide
- Serrated pin type attachment
- Can be used for laminated and thermoplastic sockets
- Easily compensates for the variance between pin and socket alignment when used with the 4-hole plate

Warranty: 1 year



P/N	Product Description	Weight Limit	Product Weight	Build Height
① 3170	Shift Shuttle Lock	136kg / 300lbs	127g	39mm
② 3170P	Shift Shuttle Lock with Plate	136kg / 300lbs	153g	39mm

REPLACEMENT PARTS	
P/N	Description
3140-MP	Medium Pin for Base Lock 3140, Shift Lock 3170 & EZ Lock 3190, 1.5 inch
3140-LP	Long Pin for Base Lock 3140, Shift Lock 3170 & EZ Lock 3190, 2 inch
3140-XLP	Extra Long Pin for 3140, Shift Lock 3170

Locks



Components (Fig.1)

1. Lock Body (Pin included)
2. Clutch Lock Mechanism (Left hand thread)
3. Pin (P/N 3120-P)
4. Assembly Bolt
5. Pin Cavity Dummy
6. Dummy Base for cast mounting (nails included)
7. Lock Cavity Dummy (a. Short and b. Long)
8. Screws



Fabrication Dummy Kit for Clutch Lock



Pin for Clutch Lock

3120

LINK CLUTCH LOCK

The 3120 Link Clutch Lock is an aluminum bodied, one-way smooth engagement lock, with push button release., and can be used for high impact use, e.g., walking, jogging, and occasional running.

Specifications:

Overall Dimensions assembled:

Height (lock body only) 37mm / 1.5in

- This shuttle lock is best fitted with patients having a contracted joint or an unusual, non-optimal pyramid alignment
- The lock is delivered assembled and ready to be integrated into the socket during the lamination or thermoplastic process
- A dummy system assures easy lamination
- The CLP pin makes it easy to lock or to unlock the liner and offers a secure connection between liner and prosthesis
- Uses new easy to release clutch unit
- Clutch Lock Mechanism is easily replaceable

This shuttle lock is best fitted with patients having a contracted joint or an unusual alignment line where a typical lock/pyramid component would not end up in the optimal location. The lock can be laminated into the socket, and then transferred with the alignment before final lamination. A dummy system assures easy lamination. The CLP pin makes it easy to lock or to unlock the liner and offers a secure connection between liner and prosthesis. Uses new easy to release clutch lock unit.

Warranty: 1 year

P/N	Product Description	Weight Limit
3120	Link Clutch Lock	136kg / 300lbs

3130

INTEGRA CLUTCH LOCK

Infinite Adjustment Lock

- Smooth gear mechanism
- All-in-one design with built-in pyramid
- Quiet operation
- Cost effective pricing
- Ideal for laminated sockets

Warranty: 1 year

P/N	Product Description	Weight Limit
3130	Integra Clutch Lock	125kg / 275lbs

REPLACEMENT PARTS

P/N	Description
CLP	Pin for Clutch Lock 3130 / 3150 / 3160
3130-1	Fabrication Dummy Kit For Clutch Lock 3130

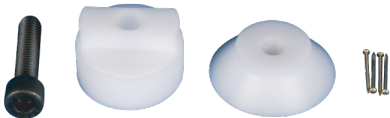


Locks

①



②



Pin for Clutch Lock

3150
THREADED CLUTCH LOCK

Infinite Adjustment Modular Lock

Please visit www.stngco.com
for fabrication instructions

- Smooth gear mechanism
- Built-in pyramid
- Screw-in modular design provides easy maintenance when required
- Cost effective pricing
- Need to use with titanium or stainless steel 3-prong (1221S) or 4-prong rotating base (1421S, 1223T) and 4-hole rotating base (1214T)

Warranty: 1 year

Three types available:

3150TF – Threaded clutch lock with titanium 4-prong rotating base

3150S – Threaded clutch lock with stainless steel 3-prong rotating base

3150 – Threaded clutch lock

P/N	Product Description	Weight Limit
① 3150TF	Threaded Clutch Lock	125kg / 275lbs
② 3150S	Threaded Clutch Lock	125kg / 275lbs
③ 3150	Threaded Clutch Lock	125kg / 275lbs

REPLACEMENT PARTS	
P/N	Description
CLP	Pin for Clutch Lock 3130 / 3150 / 3160
3150-1	Fabrication Dummy Kit For Clutch Lock 3150

Locks



3330

MODULAR CLUTCH LOCK

- Easy release unlocking mechanism
- Low build height and light-weight
- Wear-resistant stainless steel pin guide
- K3 activity level
- Cost Effective Pricing

Suggested HCPCS Code(s): L5671

P/N	Description	Build Height	Weight Limit
3330	Clutch Lock	25mm/1in	125kg/275lb

3142

REINFORCED SHUTTLE LOCK



- Versatile cylindrical body with a 4-hole attachment
- Serrated pin type attachment
- Reinforced deep pin well for easy insertion
- Includes 2 pins, mounting bolts, 2 rubber O-rings
- Cost effective pricing

Warranty: 1 year

Suggested HCPCS Code(s): L5671

P/N	Product Description	Weight Limit	Warranty
3142-S	Base Shuttle Lock	136kg / 300lbs	1 year
3142-M	Base Shuttle Lock	136kg / 300lbs	1 year
3142-L	Base Shuttle Lock	136kg / 300lbs	1 year
3142-XL	Base Shuttle Lock	136kg / 300lbs	1 year



REPLACEMENT PARTS

P/N Description

3140-1 Fabrication Dummy Kit for Shuttle Lock 3140



REPLACEMENT PARTS

P/N	Description	Length
3142-SP	Short Pin for Base Shuttle Lock 3140	1in
3142-MP	Medium Pin for Base Shuttle Lock 3140	1.5in
3142-LP	Long Pin for Base Shuttle Lock 3140	2in
3142-XLP	Extra Long Pin for Base Shuttle Lock 3140	2.5in



Locks



Push button can be cut to various lengths
(Should not be shortened more than 12.7mm)

3140

BASE SHUTTLE LOCK

Light weight and cost effective

- Versatile cylindrical body with a 4-hole attachment
- Serrated pin type attachment
- Deep pin well for easy insertion
- Includes 2 pins
- Cost effective pricing
- Recommend use with our new round 4 hole adapters.
The 18xx series

Warranty: 1 year



P/N	Product Description	Weight Limit	Length	Warranty
3140-S	Base Shuttle Lock with 2 Short Pins	136kg / 300lbs	1in	1 year
3140-M	Base Shuttle Lock with 2 Medium Pins	136kg / 300lbs	1.5in	1 year
3140-L	Base Shuttle Lock with 2 Long Pins	136kg / 300lbs	2in	1 year
3140-XL	Base Shuttle Lock with 2 Extra Long Pins	136kg / 300lbs	2.5in	1 year



REPLACEMENT PARTS		
P/N	Description	Length
3140-SP	Short Pin for Base Shuttle Lock 3140	1in
3140-MP	Medium Pin for Base Shuttle Lock 3140	1.5in
3140-LP	Long Pin for Base Shuttle Lock 3140	2in
3140-XLP	Extra Long Pin for Base Shuttle Lock 3140	2.5in

REPLACEMENT PARTS	
P/N	Description
3140-1	Fabrication Dummy Kit for Shuttle Lock 3140

SUSPENSION SYSTEMS

Suspension Sleeve



3400 ECLIPSE SUSPENSION SLEEVE

The NEW Eclipse Suspension Sleeve provides extreme durability and comfort for your patient. Imagine not having to replace suspension sleeves every 3 months.

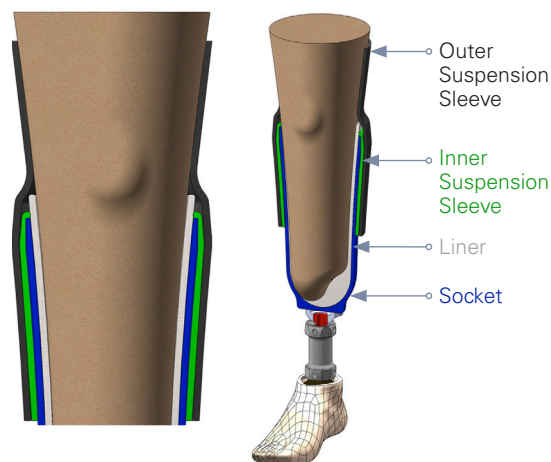
A unique combination of materials and smart design, ST&G has created a superior suspension sleeve that offers high performance and secure fit.

- Reinforced silicone and strategically located Parylene® coating provides maximum durability
- Dual sleeve design with non-slip inner strip of surface provides a maximum airtight seal which eliminates slippage. This revolutionary patent pending design helps keep the sleeve in place even during the most strenuous activity
- Depending on activity, the Eclipse sleeve easily slides over itself to adjust for length
- The Parylene® coating does not inhibit knee flexion which allows for excellent performance and comfort
- The Eclipse offers a platinum cured medical grade silicone with a Parylene® surface which reduces surface friction between the sleeve and skin helping in the prevention of skin shear for fragile skin and blister reduction
- The smooth and silky coating allows for clothing to naturally hang and not bunch up

Warranty: 120 day warranty against defect and workmanship

Suggested HCPCS code(s)

- **L5685**
- Pending PDAC approval. Visit our website at www.stngco.com for updates



P/N	Description	Circumference
3400B-XS	Black Suspension Sleeve – Extra Small	35cm – 41cm / 13 3/4in – 16 1/8in
3400B-S	Black Suspension Sleeve – Small	41cm – 49cm / 16in – 19 1/4in
3400B-M	Black Suspension Sleeve – Medium	49cm – 55cm / 19 1/4in – 21 3/4in
3400B-L	Black Suspension Sleeve – Large	55cm – 62cm / 21 3/4in – 24 1/2in
3400T-XS	Tan Suspension Sleeve – Extra Small	35cm – 41cm / 13 3/4in – 16 1/8in
3400T-S	Tan Suspension Sleeve – Small	41cm – 49cm / 16in – 19 1/4in
3400T-M	Tan Suspension Sleeve – Medium	49cm – 55cm / 19 1/4in – 21 3/4in
3400T-L	Tan Suspension Sleeve – Large	55cm – 62cm / 21 3/4in – 24 1/2in

Measure circumference 15cm (6in) above mid-patella and choose the correct size

TO ORDER CALL: 714-524-0663 • **FAX:** 714-364-8113 • **EMAIL:** orders@stngco.com



Suspension Sleeve

LUNAR



3420 LUNAR SLEEVE PROTECTOR

The Lunar is a premium under sleeve used to enhance the performance of the outer suspension sleeve. The Lunar will provide increased ease of movement, yet promote an ultimate outer suspension sleeve to socket seal. The Lunar out performs the competition through its unique combination of materials and smart design offering higher performance and secure fit.

- Reinforced silicone and strategically located Parylene® coating provides maximum durability.
- Premium gaiter with prominent non-slip inner and outer silicone strip provides an optimal airtight seal to the socket and outer sleeve which eliminates slippage.
- The Lunar gaiter is made with a medical grade platinum cured silicone finished with a low friction Parylene® coated surface.
- The Parylene® coating does not inhibit knee flexion or binding of the outer sleeve, which allows for excellent performance and comfort.

Warranty: 90 day warranty against defect and workmanship.

P/N	Description	Circumference
3420-XS	Lunar Black Under Sleeve – Extra Small	35cm – 41cm / 13in – 16in
3420-S	Lunar Black Under Sleeve – Small	41cm – 49cm / 16in – 19in
3420-M	Lunar Black Under Sleeve – Medium	49cm – 55cm / 19in – 21in
3420-L	Lunar Black Under Sleeve – Large	55cm – 62cm / 21in – 24in

SOLAR



3700 SOLAR SUSPENSION SLEEVE

The Solar sleeve is a new revolutionary silicone suspension sleeve that will provide ease of movement yet promote excellent sleeve to socket sealing. A unique combination of materials and smart design, ST&G has created a superior sleeve that offers high performance and secure fit.

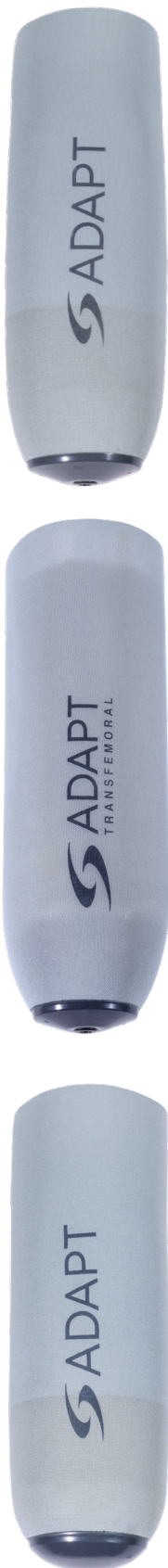
- A unique combination of reinforced silicone and strategically located Parylene® coating promotes maximum durability.
- Solar has designed surfaces providing maximum airtight seal to help eliminate slippage.
- The Parylene® coating enhances knee flexion, allowing for excellent performance and comfort.
- The Solar sleeve is made with a medical grade, platinum cured silicone, finished with a low friction Parylene® coated surface to help decrease shear and help protect fragile skin and promote blister reduction when worn directly on the skin.

Warranty: 90 day warranty against defect and workmanship.

P/N	Description	Circumference
3700-XS	Solar Sleeve – Extra Small	35cm – 41cm / 13in – 16in
3700-S	Solar Sleeve – Small	41cm – 49cm / 16in – 19in
3700-M	Solar Sleeve – Medium	49cm – 55cm / 19in – 21in
3700-L	Solar Sleeve – Large	55cm – 62cm / 21in – 24in

SUSPENSION SYSTEMS

Liners



3012 / 3092 ADAPT TRANSTIBIAL / TRANSFEMORAL

Locking

The ADAPT liner is a silicone gel liner with mineral oil embedded. The soft gel with flexible fabric allows snug fit of various contours without restriction. The liner conforms very nicely while providing comfort. It is suitable for moderate to high activity patients. The matrix which is built into the liner prevents distal elongation of the liner for locking application. ADAPT and AGILE have the same thickness profile, thus are interchangeable if needed.

Warranty: 6 month

Transtibial Locking

P/N	Description
3012L-18	ADAPT Locking Liner, 18
3012L-20	ADAPT Locking Liner, 20
3012L-22	ADAPT Locking Liner, 22
3012L-23.5	ADAPT Locking Liner, 23.5
3012L-25	ADAPT Locking Liner, 25
3012L-26.5	ADAPT Locking Liner, 26.5
3012L-28	ADAPT Locking Liner, 28
3012L-30	ADAPT Locking Liner, 30
3012L-32	ADAPT Locking Liner, 32
3012L-34	ADAPT Locking Liner, 34
3012L-36	ADAPT Locking Liner, 36

Transtibial Cushion

P/N	Description
3012C-18	ADAPT Cushion Liner, 18
3012C-20	ADAPT Cushion Liner, 20
3012C-22	ADAPT Cushion Liner, 22
3012C-23.5	ADAPT Cushion Liner, 23.5
3012C-25	ADAPT Cushion Liner, 25
3012C-26.5	ADAPT Cushion Liner, 26.5
3012C-28	ADAPT Cushion Liner, 28
3012C-30	ADAPT Cushion Liner, 30
3012C-32	ADAPT Cushion Liner, 32
3012C-34	ADAPT Cushion Liner, 34
3012C-36	ADAPT Cushion Liner, 36

Transfemoral

P/N	Description
3092L-30	ADAPT Locking TF Liner, 30
3092L-32	ADAPT Locking TF Liner, 32
3092L-34	ADAPT Locking TF Liner, 34
3092L-36	ADAPT Locking TF Liner, 36
3092L-38	ADAPT Locking TF Liner, 38
3092L-40	ADAPT Locking TF Liner, 40
3092L-45	ADAPT Locking TF Liner, 45



Liners



3022 AGILE

TRANSTIBIAL

Locking

The AGILE liner(s) offer a full matrix which enhances control for higher activity and secure fit. Helps in stabilizing the limb, yet provides comfort. Suitable for moderate to high activity patients. The enhanced distal matrix is part of the fabric covering of the liner and improves distal elongation control of the liner for both locking and cushion liner applications. A full matrix outer fabric covering that controls full length elongation and is available in both locking and cushion liner applications. ADAPT and AGILE have the same thickness profile, thus are interchangeable if needed.

Warranty: 6 month

Transtibial Locking

P/N	Description
3022L-18	AGILE Locking Liner, 18
3022L-20	AGILE Locking Liner, 20
3022L-22	AGILE Locking Liner, 22
3022L-23.5	AGILE Locking Liner, 23.5
3022L-25	AGILE Locking Liner, 25
3022L-26.5	AGILE Locking Liner, 26.5
3022L-28	AGILE Locking Liner, 28
3022L-30	AGILE Locking Liner, 30
3022L-32	AGILE Locking Liner, 32
3022L-34	AGILE Locking Liner, 34
3022L-36	AGILE Locking Liner, 36

Transtibial Cushion

P/N	Description
3022C-18	AGILE Cushion Liner, 18
3022C-20	AGILE Cushion Liner, 20
3022C-22	AGILE Cushion Liner, 22
3022C-23.5	AGILE Cushion Liner, 23.5
3022C-25	AGILE Cushion Liner, 25
3022C-26.5	AGILE Cushion Liner, 26.5
3022C-28	AGILE Cushion Liner, 28
3022C-30	AGILE Cushion Liner, 30
3022C-32	AGILE Cushion Liner, 32
3022C-34	AGILE Cushion Liner, 34
3022C-36	AGILE Cushion Liner, 36

SUSPENSION SYSTEMS

MAGLiners



MAGLiners, PREMIER & HYDRO are designed exclusively for the MAGLOCK Suspension System. The MAGLOCK eases the frustration of donning a pin lock liner for patients K1 to K3. The MAGLOCK is developed using a rare earth magnet which achieves up to 90lbs of adhesion. The large distal target allows the patient to be 10 degrees off center and still get suspension.

3030 / 3050 HYDRO

MAGLINERS – TRANSTIBIAL / TRANSFEMORAL

Exclusively designed for the MAGLOCK

ST&G revolutionized the liner industry with the use of Parylene® on the surface of the silicone liner. We were also the first to encapsulate the outer cloth into the liner. We have eliminated delamination. We have designed a new cloth specially for this process.

The Hydro MAGLiner's silky smooth mineral oil embedded platinum cured medical grade silicone liner has the unique ability to repel water. This hydrophobic property makes the Hydro the easiest and fastest liner to clean and sanitize

The Parylene® surface reduces surface friction between the liner/skin and liner/socket for better comfort and donning. The Hydro MAGLiner reduces skin shear for fragile skin and will help with blister reduction. The matrix which is built into the liner prevents distal elongation and delamination.

The Hydro Skin offers proprietary donning and doffing strips to aid the patient in easier application/removal. It is suitable for moderate to high activity patients who require cushioning over sensitive areas in the socket. The Hydro Skin liner's opaque pigment gives a natural "skin tone" to all ethnic skin types.

Warranty: 6 month

Transtibial

P/N	Description	P/N	Description
3030-18	MAGLiner Hydro, 18	3030-28	MAGLiner Hydro, 28
3030-20	MAGLiner Hydro, 20	3030-30	MAGLiner Hydro, 30
3030-22	MAGLiner Hydro, 22	3030-32	MAGLiner Hydro, 32
3030-23.5	MAGLiner Hydro, 23.5	3030-34	MAGLiner Hydro, 34
3030-25	MAGLiner Hydro, 25	3030-36	MAGLiner Hydro, 36
3030-26.5	MAGLiner Hydro, 26.5		

Transfemoral

P/N	Description	P/N	Description
3050-30	MAGLiner Hydro, 30	3050-38	MAGLiner Hydro, 38
3050-32	MAGLiner Hydro, 32	3050-40	MAGLiner Hydro, 40
3050-34	MAGLiner Hydro, 34	3050-45	MAGLiner Hydro, 45
3050-36	MAGLiner Hydro, 36		



MAGLiners



3040 / 3060 PREMIER

MAGLINERS – TRANSTIBIAL / TRANSFEMORAL

PREMIER – Exclusively designed for the MAGLOCK

This premium liner is designed for the health of the residual limb and ease of donning. Manufactured with mineral oil embedded platinum cured medical grade silicone and sheathed in a seamless durable fabric. The matrix which is built into the liner prevents distal elongation. It is suitable for moderate to high activity patients.

Warranty: 6 month

Transtibial

P/N	Description	P/N	Description
3040-18	MAGLiner Premier, 18	3040-28	MAGLiner Premier, 28
3040-20	MAGLiner Premier, 20	3040-30	MAGLiner Premier, 30
3040-22	MAGLiner Premier, 22	3040-32	MAGLiner Premier, 32
3040-23.5	MAGLiner Premier, 23.5	3040-34	MAGLiner Premier, 34
3040-25	MAGLiner Premier, 25	3040-36	MAGLiner Premier, 36
3040-26.5	MAGLiner Premier, 26.5		

Transfemoral

P/N	Description	P/N	Description
3060-30	MAGLiner Premier, 30	3060-38	MAGLiner Premier, 38
3060-32	MAGLiner Premier, 32	3060-40	MAGLiner Premier, 40
3060-34	MAGLiner Premier, 34	3060-45	MAGLiner Premier, 45
3060-36	MAGLiner Premier, 36		

* Using the MAGLINER with the MAGLOCK offers the lowest profile possible.

MAGLiners, PREMIER & HYDRO are designed exclusively for the MAGLOCK Suspension System. The MAGLOCK eases the frustration of donning a pin lock liner for patients K1 to K3. The MAGLOCK is developed using a rare earth magnet which achieves up to 90lbs of adhesion. The large distal target allows the patient to be 10 degrees off center and still get suspension.



Liners

3020 / 3070 PARASIL TRANSTIBIAL / TRANSFEMORAL

Parasil Liner offers a superior durable design for your active patient and is available in both PIN LOCKING and CUSHION.

The silky smooth Parasil Liner is designed for high performance with minimal maintenance. Made with platinum cured medical grade mineral oil embedded silicone with a Parylene® coating gives the Parasil the unique ability to repel water and lower the co-efficiency of friction. This hydrophobic property is easy to clean and sanitize leaving it odor free.

The Parylene® surface reduces surface friction between the liner/skin and liner/socket which will help in the prevention of skin shear for fragile skin and blister reduction. The Parasil offers proprietary donning and doffing strips to aid the patient in easier application/removal. It is suitable for moderate to high activity patients who require cushioning over sensitive areas in the socket. The Parasil liner's opaque pigment gives a natural "skin tone" to all ethnic skin types.

Warranty: 6 month

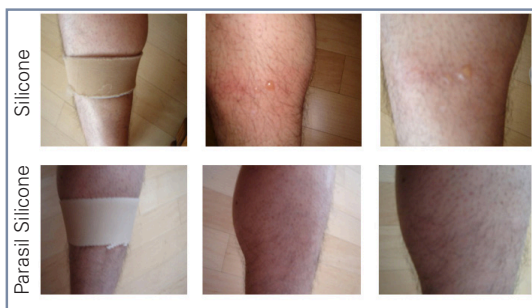
Transtibial

P/N	Description	P/N	Description
3020L-18	Parasil Locking Liner, 18	3020C-18	Parasil Cushion Liner, 18
3020L-20	Parasil Locking Liner, 20	3020C-20	Parasil Cushion Liner, 20
3020L-22	Parasil Locking Liner, 22	3020C-22	Parasil Cushion Liner, 22
3020L-23.5	Parasil Locking Liner, 23.5	3020C-23.5	Parasil Cushion Liner, 23.5
3020L-25	Parasil Locking Liner, 25	3020C-25	Parasil Cushion Liner, 25
3020L-26.5	Parasil Locking Liner, 26.5	3020C-26.5	Parasil Cushion Liner, 26.5
3020L-28	Parasil Locking Liner, 28	3020C-28	Parasil Cushion Liner, 28
3020L-30	Parasil Locking Liner, 30	3020C-30	Parasil Cushion Liner, 30
3020L-32	Parasil Locking Liner, 32	3020C-32	Parasil Cushion Liner, 32
3020L-34	Parasil Locking Liner, 34	3020C-34	Parasil Cushion Liner, 34
3020L-36	Parasil Locking Liner, 36	3020C-36	Parasil Cushion Liner, 36

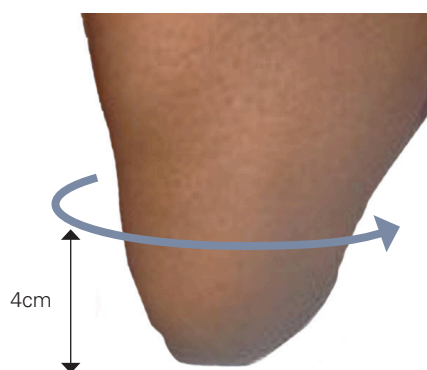
Transfemoral

P/N	Description	P/N	Description
3070L-30	Parasil Locking TF Liner, 30	3070C-30	Parasil Cushion TF Liner, 30
3070L-32	Parasil Locking TF Liner, 32	3070C-32	Parasil Cushion TF Liner, 32
3070L-34	Parasil Locking TF Liner, 34	3070C-34	Parasil Cushion TF Liner, 34
3070L-36	Parasil Locking TF Liner, 36	3070C-36	Parasil Cushion TF Liner, 36
3070L-38	Parasil Locking TF Liner, 38	3070C-38	Parasil Cushion TF Liner, 38
3070L-40	Parasil Locking TF Liner, 40	3070C-40	Parasil Cushion TF Liner, 40
3070L-45	Parasil Locking TF Liner, 45	3070C-45	Parasil Cushion TF Liner, 45

Blister Reduction Comparison – Silicone vs. Parasil Silicone



HOW TO MEASURE



Transtibial Liner

Step 1

Measure the circumference of the residual limb at 4cm from the distal end.

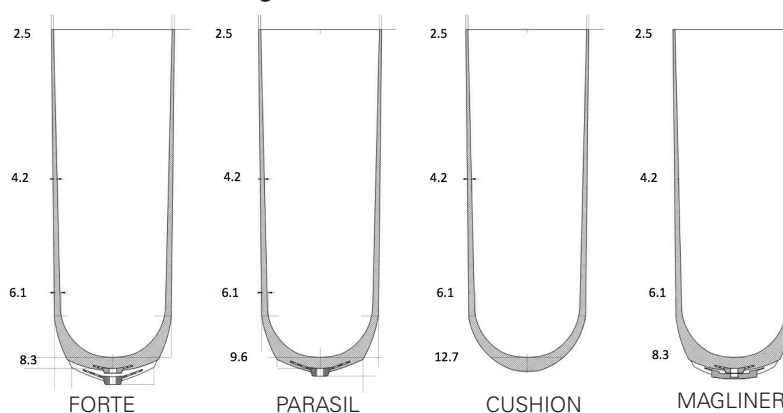
Step 2

Choose the liner size which corresponds to the measurement or one smaller.

Step 3

Never choose a liner size which is larger than the measurement.

BK LINERS – Wall Averages



Transfemoral Liner

Step 1

Measure the circumference of the residual limb at 4cm from the distal end.

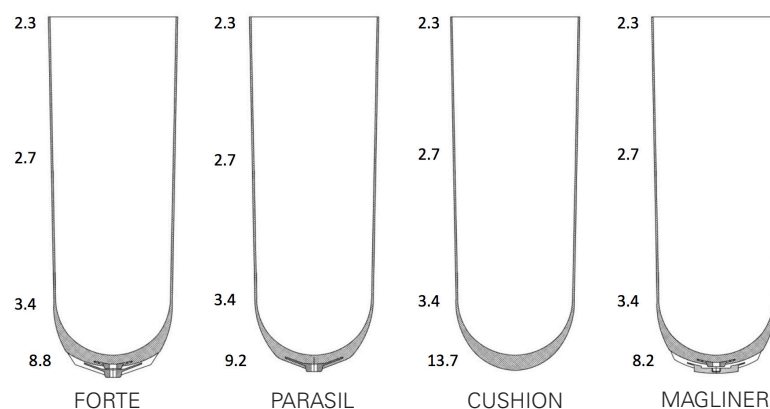
Step 2

Choose the liner size which corresponds to the measurement or one smaller.

Step 3

Never choose a liner size which is larger than the measurement.

AK LINERS – Wall Averages



Valves



* Auto Expulsion

3201 XP VALVE

ST&G XP Valve is designed for suction suspension systems. It creates negative pressure inside the socket. This valve is positioned in a housing that seals securely against the inner surface of the hard socket near the distal end. The valve expulses the air under positive pressure when donning a socket. During removal of the prostheses, the socket seal needs to be released via doffing of the suspension sleeve and seal to allow air back into the hard socket. The XP Valve is an auto-expulsion and easy to install package. This is recommended for transtibial amputation and requires normal socket fabrication. Added features include: lightweight design, low build height, easy fabrication and is simple to clean.

Warranty: 1 year

P/N	Description
3201	XP Valve



* Non-Auto Expulsion

3202 XP AK VALVE

The XP AK Valve is a manual expulsion valve that is equipped with a push button suction release. It is easy to install and recommended for transfemoral users. The core of the valve can be unscrewed from the housing, which allows for easier donning and doffing of the socket and for use of pull-socks with atmospheric suction suspension. Added features include: simple installation, low build height, durability, and can be used for any activity level

Warranty: 1 year

P/N	Description
3202	XP AK Valve



3204 XP RELEASE VALVE

The 3204 XP release valve is an auto-expulsion with push button suction release in the same compact, easy to install component, and designed to be used with all suction suspension systems.

- Transtibial or Transfemoral users
- Kit includes a flexible inner socket housing adapter ring
- Threaded (M10) body to securely attach through the socket from the outside near the distal end
- Auto expels air under positive pressure when entering a socket
- Remove prosthesis with the push button release to allow air back into the socket
- Can be retrofitted to an existing socket
- Can be disassembled by hand

Warranty: 1 year

Valves / Donning Sleeve

3206 XP AK+

XP AK AUTO EXPULSION PLUS RELEASE

The 3206 XP AK+ is an auto-expulsion valve with push button for suction release., and can be used for high impact use, e.g., walking, jogging, and running.

Specifications:

Overall dimensions assembled:

Diameter Base: 39mm / 1.5in
Height: 20mm / 0.78in
Weight: 41.2g / 1.45oz

The 3206 XP AK+ Release valve is an auto-expulsion with push button suction easy to install component, and designed to be used with all suction suspension systems.

Features and benefits:

- Transtibial or Transfemoral users
- Kit includes a lamination or plastic socket dummy
- Aluminum housing and retainer ring
- Auto expels air under positive pressure when entering a socket
- Remove prosthesis with the push button release to allow air back into the socket
- Valve mechanism is enclosed in Aluminum housing

Warranty: 6 months from invoice date



Components (Fig.1)

1. Valve
2. Housing Retainer
3. Housing & O-ring
4. Dummy for Rigid Sockets (Red)
5. Dummy for Flexible Sockets (Green)

P/N	Product Description
3206	XP AK Auto Expulsion Plus Release



3213

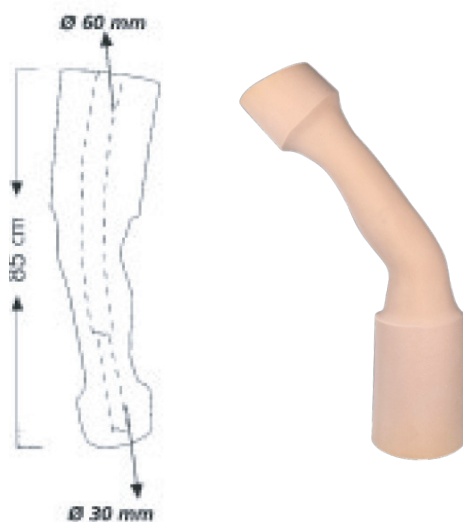
EASY DONNING SLEEVE

The easy donning sleeve is an aid which reduces the forces required to put on a prosthetic socket and also prevents the friction and pain that can be caused when donning the prosthetic socket. Added features include: easy to don AK socket with valve hole, good fit between stump and socket, easy to use and carry, optimum friction reduction between stump and socket, durability, and can be hand-washed.

P/N	Description	Width	Length
3213-S	Small Easy Donning Sleeve	28cm	96cm
3213-M	Medium Easy Donning Sleeve	34cm	97cm
3213-L	Large Easy Donning Sleeve	40cm	104cm

COSMETIC COVERS





SFA

FOAM COVER FOR ABOVE KNEE

- Durable foam
- 30° knee flexion
- Preshaped
- Center hole
- Flame resistant

Suggested HCPCS Code(s): L5705 + L5706 (KD)

P/N	Description
SFA=44L	Foam Cover for Above Knee, Calf Circum. 44cm, Left
SFA=44R	Foam Cover for Above Knee, Calf Circum. 44cm, Right



SFB

FOAM COVER FOR BELOW KNEE

- Flexible foam
- Unshaped
- Center hole
- Flame resistant
- Skin color

Suggested HCPCS Code(s): L5704

P/N	Description
SFB	Foam Cover for Below Knee

COSMETIC COVERS

Cosmetic Covers



4001 EZ COVER

EZ Cover eliminates the labor-intensive process of grinding and shaping a foam cover. Simply adjust to the proper circumferential size and length and cut as needed.

- Made of thermoplastic mesh
- Balance between rigidity and flexibility is important
- Easy to redo as necessary
- Performed shape makes it easy to adjust by hand without heat

Please do not use or apply heat to the EZ COVER or leave in an area that can expose the EZ COVER to extreme heat temperatures.

Suggested HCPCS Code(s): L5704

Warranty: 90 days

P/N	Description
4001	EZ Cover

Size: One size

Weight: 80g

Material: Chloride vinyl sheet
with special coating



Procedure of Production

		
1. Adjust to the proper circumferential size	2. Cut the extra portion and attach special tape for fixation with socket and foot.	3. Attach special tape to finish the style.

MODULAR COMPONENTS



MODULAR COMPONENTS

Connectors

①



②



③



④



1217

4-HOLE CONNECTOR, PYRAMID WITH HOLE

The non-rotatable 4-hole pyramid adapter attaches to any socket or knee with a distal 4-hole pattern. Four flat head screws are provided with every pyramid. Available in a forged and machined titanium, aluminum, or high strength stainless steel alloy, all resulting in a strong and lightweight product.

Warranty: 2 year

- ① **1217T** Titanium 4-Hole Connector, Pyramid
- ② **1217S** Stainless Steel 4-Hole Connector, Pyramid
- ③ **1217A** Aluminum 4-Hole Connector, Pyramid

P/N	Material	Product Weight	Weight Limit
① 1217T	Titanium	70g	170kg / 375lbs
② 1217S	Stainless Steel	111g	136kg / 300lbs
③ 1217A	Aluminum	81g	114kg / 250lbs

Torque Value	Torque (Nm)	Hex (mm)
M6 Flat Head Screw (Mount Screw)	10 Nm	4mm wrench

1227

4-HOLE CONNECTOR WITHOUT PYRAMID HOLE

The non-rotatable 4-hole titanium connector without pyramid hole attaches to any socket or knee with a distal 4-hole pattern. It comes with 4 flat head screws. The 1227T is manufactured by a forged and machined combination resulting in a strong and light weight product.

Warranty: 2 year

P/N	Material	Product Weight	Weight Limit
④ 1227T	Titanium	73g	170kg / 375lbs

Torque Value	Torque (Nm)	Hex (mm)
M6 Flat Head Screw (Mount Screw)	10 Nm	4mm wrench



WaterProof

All ST&G Titanium components are waterproof. (If exposed to salt water, exercise proper care post exposure by thoroughly washing and drying the titanium product).

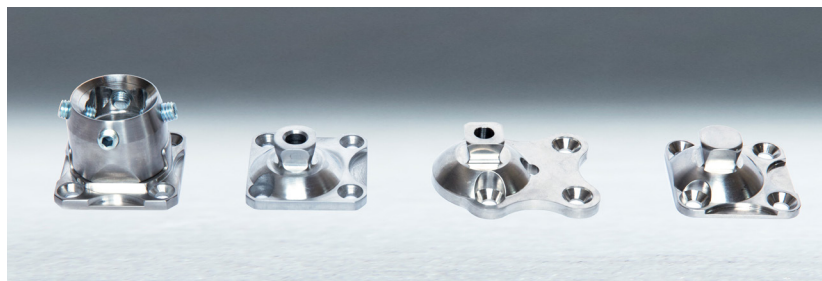


EZ Adapt Series

1717T, 1717S, 1727T, 1727S, 1737T, 1718T EZ ADAPT SERIES

The 1700 series provided linear, diagonal, and extreme offset in a 4-hole pattern made of titanium for strength and light weight.

Warranty: 2 year



① ②



③ ④



⑤



⑥



P/N	Description	Weight Limit
① 1717T	Linear offset 4 Hole pyramid, Ti (provides up to 7mm of offset)	170kg / 375lbs
② 1717S	Linear offset 4 Hole pyramid, SS (provides up to 7mm of offset)	136kg / 300lbs
③ 1727T	Diagonal offset 4-hole pyramid, Ti (provides up to 6.5mm of offset)	170kg / 375lbs
④ 1727S	Diagonal offset 4-hole pyramid, SS (provides up to 6.5mm of offset)	136kg / 300lbs
⑤ 1737T	Extreme linear offset 4 Hole pyramid, Ti (provides up to 20mm of offset)	100kg / 220lbs
⑥ 1718T	Sliding 4-hole receiver, Ti (12mm maximum slide distance)	100kg / 220lbs

Torque Value	Torque (Nm)	Hex (mm)
Sliding Adjustment M6 Set Screw	5 Nm	3mm wrench
M6 Flat Head Screw (Mount Screw)	10 Nm	4mm wrench



WaterProof

All ST&G Titanium components are waterproof.
(If exposed to salt water, exercise proper care
post exposure by thoroughly washing and
drying the titanium product).

MODULAR COMPONENTS

EZ Adapt Series

①



②



③



④



1817T, 1827T, 1837T, 1847T

EZ ADAPT SERIES

The **1800 series** provides linear, diagonal, and extreme offset with a round base which will reduce stress and prevent socket fatigue.

Warranty: 2 year

P/N	Description	Product Weight	Weight Limit
① 1817T	Linear Offset 4 Hole Pyramid with Round Base, Ti – offset is 7mm	77g	170kg / 375lbs
② 1827T	Diagonal Offset 4 Hole Pyramid with Round Base, Ti – offset is 6.5 mm diagonally from center	85g	170kg / 375lbs
③ 1837T	Extreme Linear Offset 4 Hole Pyramid with Oval Base, Ti – offset is 22mm	87g	100kg / 220lbs
④ 1847T	4 Hole Pyramid with Round Base, Ti	74g	170kg / 375lbs

Torque Value	Torque (Nm)	Hex (mm)
M6 Flat Head Screw (Mount Screw)	10 Nm	4mm wrench



WaterProof

All ST&G Titanium components are waterproof. (If exposed to salt water, exercise proper care post exposure by thoroughly washing and drying the titanium product).



Connectors

①



②



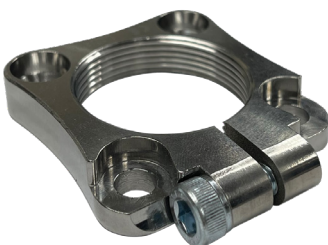
③



④



⑤



⑥



1218

4-HOLE CONNECTOR, RECEIVER

The 4-Hole Connector, Receiver is used to connect to any 4-hole thread system and pyramid connection. Used 4 flat head screws to connect to 4-hole connector. 4 set screws are used for anchoring the pyramid system as well as for making angular adjustment for alignment adjustment screws for connection. Apply loctite to all screws once the alignment and connection is finalized.

Warranty: 2 year

P/N	Material	Product Weight	Weight Limit
① 1218T	Titanium	53g	170kg / 375lbs
② 1218S	Stainless Steel	160g	136kg / 300lbs
③ 1218A	Aluminum	84g	114kg / 250lbs

Torque Value	Torque (Nm)	Hex (mm)
1218T/S M8 Set Screw (Alignment Adjustment Screw)	15 Nm	4mm wrench
1218A M8 Set Screw (Alignment Adjustment Screw)	10 Nm	4mm wrench

1214

4-HOLE ROTATING BASE

The 4-Hole Rotating Base provides 360° of rotation for pyramid adapter or pyramid receiver. Used with the 1215T, 1225T/S or 1216T/S. All attachment screws are provided with 4-hole base. The 1214T is manufactured by a forged and machined combination resulting in a strong and light weight product.

Warranty: 2 year

P/N	Material	Product Weight	Weight Limit
④ 1214T	Titanium	80g	170kg / 375lbs
⑤ 1214S	Stainless Steel	120g	136kg / 300lbs
⑥ 1214A	Aluminum	62g	114kg / 250lbs

Torque Value	Torque (Nm)	Hex (mm)
M6 Flat Head Screw (Mount Screw)	10 Nm	4mm wrench
M6 Cap Screw	10 Nm	5mm wrench



WaterProof

All ST&G Titanium components are waterproof. (If exposed to salt water, exercise proper care post exposure by thoroughly washing and drying the titanium product).

MODULAR COMPONENTS

Connectors



1274A

4-HOLE OFFSET PLATE

- 8, 17, 26mm threaded offset adjustment range
- Staggered pin hole
- 8mm build height
- 100kg / 220lb weight limit

Warranty: 2 year

P/N	Build Height	Product Weight	Weight Limit	Screw Torque
1274A	8mm	98g	100kg / 220lbs	10Nm



1243A

LOW-PROFILE 4-HOLE LAMINATION PLATE WITH THREADED HOLE

- 9.7mm very low build height
- Through hole 4-hole pattern
- Standard threaded center hole compatible with one-way valves for suction sockets
- Light weight 59 grams aluminum construction
- 136kg / 300lb weight rating

Warranty: 2 year

P/N	Description	Product Height	Weight Limit	Product Weight
1243A	Low-Profile 4-Hole Lamination Plate with Threaded Hole	9.7mm	136kg / 300lbs	59g



1244A

4-HOLE LAMINATION PLATE WITH THREADED HOLE

- 16mm build height
- Blind hole 4-hole pattern
- Standard threaded center hole compatible with one-way valves, filter system for elevated vacuum
- Light weight 98 grams aluminum construction
- 136kg / 300lbs weight rating

Warranty: 2 year

P/N	Description	Product Height	Weight Limit	Product Weight
1244A	4-Hole Lamination Plate with Threaded Hole	16mm	136kg / 300lbs	98g



Connectors



1223

4-HOLE THREADED BASE PLATE

The 4-Hole Threaded Plate is used for socket attachment. It can be used in thermoplastic and laminated socket application. The 4-hole pattern matches the standard 4-hole adapter with pyramid or receiver.

Warranty: 2 year

P/N	Material	Product Weight	Weight Limit
1223A	Aluminum	65g	125kg / 275lbs



1224

4-HOLE THREADED BASE PLATE WITH CENTER HOLE

The 4-Hole Threaded Plate with Center Hole is used for socket attachment. It can be used in thermoplastic and laminated socket application. The 4-hole pattern matches the standard 4-hole adapter with pyramid or receiver.

Warranty: 2 year

P/N	Material	Product Weight	Weight Limit
1224A	Aluminum	39g	125kg / 275lbs



1209

FOAM BLOCK, 4-HOLE ADAPTER

The foam block is designed to be laminated into a socket, and it is typically used for two step lamination process. Socket can be bench aligned onto the foam block and can be set by using any kind of quick setting glue. Once the alignment between the socket and the foam block is set, trim the foam block as needed and prepare it for second lamination. Any 4-hole adapters with European 4-hole pattern will fit onto the foam block adapter.

Warranty: 2 year

P/N	Material	Product Weight	Weight Limit
1209W	Foam	290g	136kg / 300lbs

MODULAR COMPONENTS

Double Ended Adapters



1201,1202,1203,1204

DOUBLE ENDED ADAPTER

With pyramid receivers on both ends, these titanium/stainless steel adapters provide excellent adjustability options when clearance is limited. They are available in 32mm, 45mm, 60mm and 75mm height.

Warranty: 2 year

- ① Double Ended Adapter with Pyramid, 32mm
- ② Double Ended Adapter with Pyramid, 45mm
- ③ Double Ended Adapter with Pyramid, 60mm
- ④ Double Ended Adapter with Pyramid, 75mm

P/N	Material	Height	Product Weight	Weight Limit
① 1201T	Titanium	32mm	88g	170kg / 375lbs
② 1202T	Titanium	45mm	99g	170kg / 375lbs
③ 1203T	Titanium	60mm	113g	170kg / 375lbs
④ 1204T	Titanium	75mm	126g	170kg / 375lbs
① 1201S	Stainless Steel	32mm	150g	136kg / 300lbs
② 1202S	Stainless Steel	45mm	166g	136kg / 300lbs
③ 1203S	Stainless Steel	60mm	192g	136kg / 300lbs
④ 1204S	Stainless Steel	75mm	210g	136kg / 300lbs

Torque Value	Torque (Nm)	Hex (mm)
M8 Set Screw	15 Nm	4mm wrench

1271

DOUBLE ENDED PYRAMID ADAPTER

T

Warranty: 2 year

P/N	Material	Height	Product Weight	Weight Limit
1271T	Titanium	10mm	76g	170kg / 375lbs
1271S	Stainless Steel	10mm	139g	136kg / 300lbs



WaterProof

All ST&G Titanium components are waterproof. (If exposed to salt water, exercise proper care post exposure by thoroughly washing and drying the titanium product).



Double Ended Adapters

①



1261,1262,1263,1264

DOUBLE ENDED ADAPTER WITH PYRAMID

With pyramid and pyramid receiver on both ends, these titanium/stainless steel adapters provide excellent adjustability options when clearance is limited. They are available in 32mm, 45mm, 60mm and 75mm height.

Warranty: 2 year

②



① Double Ended Adapter with Pyramid, 32mm

② Double Ended Adapter with Pyramid, 45mm

③ Double Ended Adapter with Pyramid, 60mm

④ Double Ended Adapter with Pyramid, 75mm

③



④



P/N	Material	Height	Product Weight	Weight Limit
① 1261T	Titanium	32mm	75g	170kg / 375lbs
② 1262T	Titanium	45mm	86g	170kg / 375lbs
③ 1263T	Titanium	60mm	99g	170kg / 375lbs
④ 1264T	Titanium	75mm	111g	170kg / 375lbs
① 1261S	Stainless Steel	32mm	121g	136kg / 300lbs
② 1262S	Stainless Steel	45mm	146g	136kg / 300lbs
③ 1263S	Stainless Steel	60mm	166g	136kg / 300lbs
④ 1264S	Stainless Steel	75mm	188g	136kg / 300lbs

Torque Value	Torque (Nm)	Hex (mm)
M8 Set Screw	15 Nm	4mm wrench



WaterProof

All ST&G Titanium components are waterproof. (If exposed to salt water, exercise proper care post exposure by thoroughly washing and drying the titanium product).

MODULAR COMPONENTS

Double Ended Adapters

①



1751T, 1752T, 1753T

DOUBLE ENDED RECEIVER ADAPTER,
ADJUSTABLE 12.7MM HEIGHT, TI
EZ ADAPT SERIES

The Adjustable Height Tube Clamp offers three variations. The four screws are used for anchoring the mating pyramid system as well as for making angular adjustment for alignment. The clamp screw can be loosened and the corresponding threaded tube section can be lengthened up to a maximum of 12.7mm/0.5 in from fully threaded in position. Total build height range is from 59mm to 72mm, and 75mm to 87mm for HD version. Apply loctite to all screws once the alignment and connection is finalized, this includes the threaded tube section to prevent rotation.

②



① **1751T** Double Ended Receiver Adapter,
Adjustable 12.7mm (59 to 72mm) Height, Ti

② **1752T** Double Ended Receiver Adapter,
Heavy Duty, Adjustable 12.7mm (75 to 87mm) Height, Ti

③ **1753T** Adjustable Height Tube Clamp Pyramid Receiver,
Heavy Duty, Adjustable 12.7mm (45 to 57mm) Height, Ti

③



Warranty: 2 year

P/N	Description	Weight Limit
① 1751T	Variable Height Double Ended Adapter, Ti (Build Height range 59mm to 72mm)	100kg / 220lbs
② 1752T	Adjustable Height Double Ended Adapter, Heavy Duty, Ti (Build Height range 75mm to 87mm)	136kg / 300lbs
③ 1753T	Adjustable Height Tube Clamp Pyramid Receiver, Heavy Duty, Ti (Build Height range 45mm to 57mm)	125kg / 275lbs

Torque Value	Torque (Nm)	Hex (mm)
M8 Set Screw	15 Nm	4mm wrench
M6 Clamp Screw	7 Nm	4mm wrench

The 1753T is recommended for temporary alignment purposes. Always swap out for correct length pylons.

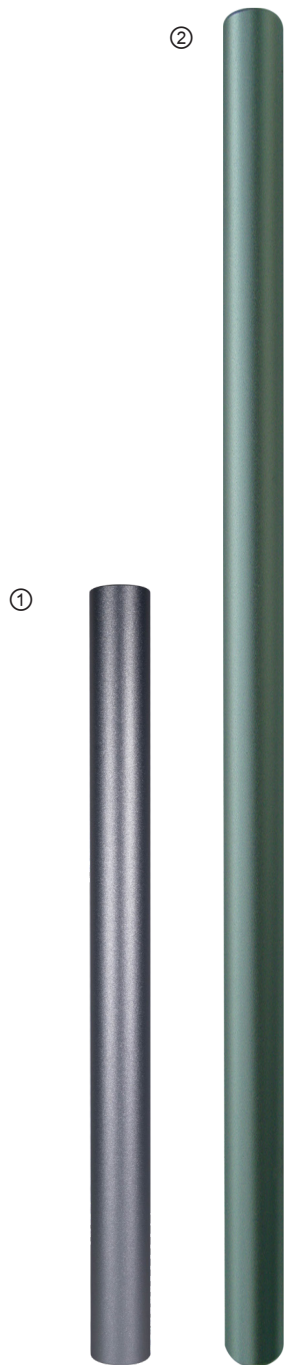


WaterProof

All ST&G Titanium components are waterproof. (If exposed to salt water, exercise proper care post exposure by thoroughly washing and drying the titanium product).



Aluminum Tubes



1209,1210

PYLON, 30MM ALUMINUM

The aluminum tube has a diameter of 30mm and length of 385mm or 910mm. It is extruded and shot peened for an optimum strength. It can be cut to length for use.

Warranty: 2 year

① **1209A** Pylon, 30mm Aluminum 385mm/15 in length

② **1210A** Pylon, 30mm Aluminum 910mm/36 in length

P/N	Material	Length	Product Weight	Weight Limit
① 1209A	Aluminum	385mm / 15in	227g	136kg / 300lbs
② 1210A	Aluminum	910mm / 36in	538g	114kg / 250lbs

Tube Clamp Assembly



1211

TUBE CLAMP ASSEMBLY, 30MM

The 30mm aluminum tube has a permanent adapter at one end. It can be cut to length. There is an adapter that is either forged and machined titanium or aluminum, or stainless steel, with an aluminum tube that is extruded and shot peened for an optimum fatigue strength. This combination creates a high quality, durable and strong component.

- ① **1211T** Titanium Tube Clamp Assembly
- ② **1211S** Stainless Steel Tube Clamp Assembly
- ③ **1211A** Aluminum Steel Tube Clamp Assembly

Warranty: 2 year

- ④ **1211MS-200/1211MS-400** Molded Stainless Steel Tube Clamp Assembly

The molded stainless steel fixed adapter with 30mm aluminum tube comes in two lengths 200mm and 400mm.

Warranty: 1 year

- ⑤ **1211A-OP** Aluminum Tube Clamp Assembly - One Piece

The aluminum fixed adapter with 30mm aluminum tube has a permanent adapter at one end. It can be cut to length. This one piece tube clamp assembly design makes this adapter great for aligning a prosthesis where space is limited. The aluminum adapter and tube combinations are 3D forged and machined for optimum fatigue strength. This combination creates a high quality and durable product while maintaining the light weight.

Warranty: 2 year

P/N	Material	Product Weight	Weight Limit
① 1211T	Titanium	306g	170kg / 375lbs
② 1211S	Stainless Steel	344g	136kg / 300lbs
③ 1211A	Aluminum	307g	114kg / 250lbs
④ 1211MS-200	Molded SS	201g	90kg / 198lbs
1211MS-400	Molded SS	320g	90kg / 198lbs
⑤ 1211A-OP	Aluminum	280g	114kg / 250lbs

Torque Value	Torque (Nm)	Hex (mm)
M8 Set Screw	15 Nm	4mm wrench
M8 Set Screw (1211A/1211A-OP)	10 Nm	4mm wrench



All ST&G Titanium components are waterproof. (If exposed to salt water, exercise proper care post exposure by thoroughly washing and drying the titanium product).



Tube Clamp Assembly



1241

TUBE CLAMP ASSEMBLY

Titanium Low Profile Tube Clamp Assembly

The low profile titanium fixed adapter with 30mm aluminum tube has a permanent adapter at one end. It can be cut to length. The titanium adapter is forged and machined while the aluminum tube with 223mm is extruded and shot peened for an optimum fatigue strength. This combination creates high quality, durable and strong component.

Warranty: 2 year

P/N	Material	Product Weight	Weight Limit
1241T	Titanium	232g	136kg / 300lbs
Torque Value		Torque (Nm)	Hex (mm)
M8 Set Screw		15 Nm	4mm wrench

1205

TUBE WITH PYRAMID RECEIVER

The tube adapter provides optimum strength and options for low clearance requirements.

Warranty: 2 year

P/N	Material	Height	Product Weight	Weight Limit
1205T	Titanium	100mm	128g	170kg / 375lbs
Torque Value		Torque (Nm)	Hex (mm)	
M8 Set Screw		15 Nm	4mm wrench	



1206

TUBE WITH PYRAMID RECEIVER, 45MM

Warranty: 2 year

P/N	Material	Height	Product Weight	Weight Limit
1206S	Stainless Steel	45mm	96g	136kg / 300lbs
1206T	Titanium	45mm	61g	170kg / 375lbs
Torque Value		Torque (Nm)	Hex (mm)	
Alignment Adjustment Set Screw		15 Nm	4mm wrench	



1207

TUBE WITH PYRAMID RECEIVER, 60MM

Warranty: 2 year

P/N	Material	Height	Product Weight	Weight Limit
1207S	Stainless Steel	60mm	112g	125kg / 275lbs
1207T	Titanium	60mm	71g	170kg / 375lbs
Torque Value		Torque (Nm)	Hex (mm)	
Alignment Adjustment Set Screw		15 Nm	4mm wrench	



MODULAR COMPONENTS

Tube Clamps

①



②



③



④



1212

TUBE CLAMP, 30MM, RECEIVER ADAPTER

The 30mm tube clamp adapter is designed for an optimum strength while maintaining low weight. Titanium, aluminum, or stainless steel provides a strong and durable quality product.

① **1212T** Titanium Tube Clamp

② **1212S** Stainless Steel Tube Clamp

③ **1212A** Aluminum Tube Clamp

Warranty: 2 year

④ **1212MS** Molded Stainless Steel Econo Tube Clamp

The molded stainless steel 30mm exono tube clamp adapter is designed for cost effective application.

Warranty: 1 year

P/N	Material	Product Weight	Weight Limit
① 1212T	Titanium	79g	170kg / 375lbs
② 1212S	Stainless Steel	128g	136kg / 300lbs
③ 1212A	Aluminum	83g	114kg / 250lbs
④ 1212MS	Molded SS	117g	90kg / 198lbs

Torque Value	Torque (Nm)	Hex (mm)
① 1212T M6 Cap Screw	7 Nm	5mm wrench
② 1212S M6 Cap Screw	8 Nm	5mm wrench
③ 1212A M5 Cap Screw	6 Nm	4mm wrench
③ 1212A M8 Set Screw	10 Nm	4mm wrench
④ 1212MS M5 Cap Screw	7 Nm	4mm wrench
① 1212T/② 1212S/④ 1212MS M8 Set Screw	15 Nm	4mm wrench



WaterProof

All ST&G Titanium components are waterproof. (If exposed to salt water, exercise proper care post exposure by thoroughly washing and drying the titanium product).



Tube Clamps



Offset = 5mm (.2in)



Offset = 10mm (0.39in)

1222 OFFSET TUBE CLAMP

The 30mm 1222 tube clamp offers 5mm of offset when extra alignment is needed. It is also ideal when using a pin suspension lock, where prosthetic and pin alignment can be easily adjusted using the offset clamp. This versatile clamp design also provides an offset position that can be rotated 360 degrees.

Warranty: 2 year

P/N	Material	Product Weight	Weight Limit
① 1222T	Titanium	98g	170kg / 375lbs
② 1222A	Aluminum	89g	114kg / 250lbs

Torque Value	Torque (Nm)	Hex (mm)
1222T M6 Cap Screw	7 Nm	4mm wrench
1222T M8 Set Screw	15 Nm	4mm wrench
1222A M6 Cap Screw	6 Nm	4mm wrench
1222A M8 Set Screw	10 Nm	4mm wrench

1242T 10MM OFFSET TUBE CLAMP

The 10mm Offset Tube Clamp, Ti is used to connect any component with 30mm tube system. The offset is set at 5mm from the center of the tube clamp. It is ideal for usage when extra alignment is needed. It is also ideal when using with pin suspension locks, where prosthetic and pin alignment can be easily adjusted using the offset clamp. The clamp design also provides versatility in that the offset position can be rotated in 360 degrees. So, the offset is not just fixed linearly only in one direction, but that with rotation of the tube, the offset can be linearly set 5mm from the center in any direction.

Warranty: 2 year

P/N	Material	Product Weight	Weight Limit
1242T	Titanium	139g	136kg / 300lbs

Torque Value	Torque (Nm)	Hex (mm)
M8 Set Screw (Alignment Adjustment Screw)	15 Nm	4mm wrench
M6 Cap Screw	7 Nm	4mm wrench



WaterProof

All ST&G Titanium components are waterproof. (If exposed to salt water, exercise proper care post exposure by thoroughly washing and drying the titanium product).

MODULAR COMPONENTS

Tube Clamps



1213

10° ANGLED TUBE CLAMP

The 10° titanium 30mm angled adapter is used often with hip disarticulation system. The 10° angle tilt helps at times with alignment associated with hip disarticulation system and as well as transfemoral and transtibial alignment situation.

Warranty: 2 year

P/N	Material	Product Weight	Weight Limit
1213T	Titanium	86g	100kg / 220lbs

Torque Value	Torque (Nm)	Hex (mm)
M5 Cap Screw	7 Nm	4mm wrench
M8 Set Screw	15 Nm	4mm wrench



Offset = 1/2 inch

1219

SLIDING TUBE CLAMP

The titanium 30mm sliding tube clamp adapter permits additional sliding adjustment between the prosthetic socket and tube adapter, even as the prosthesis is being worn. The sliding adjustment allows for fine tuning in any desired parallel position of the distal portion, independent of the angle of adjustment through the pyramid.

Warranty: 2 year

P/N	Material	Product Weight	Weight Limit
1219T	Titanium	185g	170kg / 375lbs

Torque Value	Torque (Nm)	Hex (mm)
M6 Cap Screw	7 Nm	4mm wrench
M8 Set Screw (Alignment Adjustment Screw)	15 Nm	4mm wrench



WaterProof

All ST&G Titanium components are waterproof. (If exposed to salt water, exercise proper care post exposure by thoroughly washing and drying the titanium product).



Tube Clamps



1252

TUBE CLAMP WITH PYRAMID

Titanium Tube Clamp with Pyramid

The titanium 30mm tube adapter with pyramid is designed for an optional strength while maintaining low weight. High strength titanium provides high quality and strong product.

Warranty: 2 year

Stainless Steel Tube Clamp with Pyramid

The stainless steel 30mm tube clamp with pyramid is made of high strength stainless steel alloys providing a strong and durable component.

Warranty: 2 year

P/N	Material	Product Weight	Weight Limit
1252T	Titanium	98g	136kg / 300lbs
1252S	Stainless Steel	105g	136kg / 300lbs

Torque Value	Torque (Nm)	Hex (mm)
M5 Cap Screw	7 Nm	4mm wrench



1238

4-HOLE CONNECTOR, RECIEVER, ROTATABLE

The rotatable 4-hole pyramid adapter attaches to any socket or knee with a distal 4-hole pattern. Four screws and washers are provided along with inner threaded mounting plate. Provides up to 24 degrees rotation. Available in forged and machined Aluminum resulting in a strong and lightweight product.

Warranty: 2 year

P/N	Material	Height	Product Weight	Weight Limit
①1238A	Aluminum	15mm	82g	100kg / 220lbs



WaterProof

All ST&G Titanium components are waterproof. (If exposed to salt water, exercise proper care post exposure by thoroughly washing and drying the titanium product).

MODULAR COMPONENTS

EZ Adapt Series

①



②



③



④



⑤



⑥



1702T, 1703T, 1704T, 1723T, 1713T, 1725T EZ ADAPT SERIES

EZ ADAPT components provide versatility to shift and/or rotate as needed, bringing easy solutions to prosthetic alignment needs without adding significant weight or modifying the prosthetic socket.

Warranty: 2 year

P/N	Description	Weight Limit
① 1702T	Rotating Receiver, 45mm, Ti	170kg / 375lbs
② 1703T	Rotating Receiver, 60mm, Ti	170kg / 375lbs
③ 1704T	Offset Rotating Receiver, Ti	136kg / 300lbs
④ 1723T	7.5 Degrees Angled Offset Receiver, Ti	136kg / 300lbs
⑤ 1713T	15 Degrees Angled Offset Receiver, Ti	136kg / 300lbs
⑥ 1725T	Offset Rotating Pyramid, Ti	136kg / 300lbs

Torque Value	Torque (Nm)	Hex (mm)
M8 Set Screw	15 Nm	4mm wrench



WaterProof

All ST&G Titanium components are waterproof. (If exposed to salt water, exercise proper care post exposure by thoroughly washing and drying the titanium product).



Connectors



1216 ROTATING RECEIVER

The Rotating Pyramid Receiver can be used with 1214T or 1221S. The 1216T is forged and machined for high strength and quality.

Warranty: 2 year

P/N	Material	Product Weight	Weight Limit
1216T	Titanium	48g	170kg / 375lbs
1216S	Stainless Steel	68g	136kg / 300lbs

Torque Value		Torque (Nm)	Hex (mm)
M8 Set Screw		15 Nm	4mm wrench



1225/1215 ROTATING PYRAMID WITH OR WITHOUT HOLE

The Rotating Pyramid with Hole (1225T) is forged and machined for both strength and quality. 1215T comes without a hole.

Warranty: 2 year

P/N	Material	Product Weight	Weight Limit
1225T	Titanium	39g	170kg / 375lbs
1225S	Stainless Steel	68g	136kg / 300lbs
1215T	Titanium	42g	170kg / 375lbs



1705T ROTATING RECEIVER

The female rotating receiver clamp is a titanium female receiver designed to thread onto the EZ Adapter series. This titanium adapter gives the ultimate advantage in strength and versatility when space is limited. This light space saving device also gives the added benefit of rotation.

Warranty: 2 year

P/N	Material	Weight Limit
1705T	Titanium	170kg / 375lbs

Torque Value		Torque (Nm)	Hex (mm)
M8 Set Screw		15 Nm	4mm wrench
M6 Cap Screw		10 Nm	5mm wrench



WaterProof

All ST&G Titanium components are waterproof. (If exposed to salt water, exercise proper care post exposure by thoroughly washing and drying the titanium product).

MODULAR COMPONENTS

Connectors



1223

4-PRONG ROTATING BASE

The 4-Prong Adapter is used for lamination onto transtibial socket. The adapter provides 360° of rotation for pyramid adapter or pyramid receiver. This product can be used with the 1215T, 1225T/S or 1216T/S. The 1223T is manufactured from high quality and strong product.

Warranty: 2 year

P/N	Material	Product Weight	Weight Limit
1223T	Titanium	64g	170kg / 375lbs

Torque Value	Torque (Nm)	Hex (mm)
M6 Cap Screw	10 Nm	5mm wrench



1221

3-PRONG ROTATING BASE

The 3-prong adapter is used for lamination onto transfemoral socket. The adapter provides 360° of rotation for pyramid adapter or pyramid receiver. This product can be used with the 1215T, 1225T/S or 1216T/S. The 1221S is manufactured by a forged and machined combination resulting in a strong and light weight product.

Warranty: 2 year

P/N	Material	Product Weight	Weight Limit
1221S	Stainless Steel	116g	136kg / 300lbs



Lamination Dummy for 3-Prong Rotating Base

REPLACEMENT PARTS	
P/N	Description
1221-1	Lamination Dummy for 3-Prong Rotating Base

Torque Value	Torque (Nm)	Hex (mm)
M6 Cap Screw	10 Nm	5mm wrench



WaterProof

All ST&G Titanium components are waterproof. (If exposed to salt water, exercise proper care post exposure by thoroughly washing and drying the titanium prouct).



Connectors



1421

4-PRONG AK ROTATING BASE

The 4-Prong AK adapter is used for lamination onto transfemoral socket. The AK Rotating Base has a new design for improved strength and alignability. This is the ideal base for flexion contracture. It has a manufactured pre-bent prong for ease of alignment and strength. The adapter provides 360 degree of rotation for pyramid adapter or pyramid receiver. This product can be used with the 1215T, 1225T/S or 1216T/S and all EZ ADAPT SERIES.

Warranty: 2 year

P/N	Material	Product Weight	Weight Limit
1421S	Stainless Steel	159g	136kg / 300lbs

Torque Value	Torque (Nm)	Hex (mm)
M6 Cap Screw	10 Nm	5mm wrench



1257

4-PRONG ROTATING BASE WITH ROTATING RECEIVER

The 4-Ear Connector with Rotating Receiver provides an option for a one step lamination into a transtibial socket. The 1257T consists of 1223T (4-Prong Rotating Base) and 1216T (Rotating Receiver).

Warranty: 2 year

P/N	Material	Product Weight	Weight Limit
1257T	Titanium	112g	136kg / 300lbs

Torque Value	Torque (Nm)	Hex (mm)
M8 Set Screw (Alignment Adjustment Screw)	15 Nm	4mm wrench
M6 cap Screw	10 Nm	5mm wrench



WaterProof

All ST&G Titanium components are waterproof. (If exposed to salt water, exercise proper care post exposure by thoroughly washing and drying the titanium product).

MODULAR COMPONENTS

Connectors



1253

3-PRONG ROTATING BASE WITH ROTATING RECEIVER

Stainless steel 3-prong rotating base with titanium rotating receiver. The 1253 (3-Prong Rotating Base with Rotating Receiver) consists of 1221S (3-Prong Rotating Base) and 1216T (Rotating Receiver).

Warranty: 2 year

P/N	Material	Product Weight	Weight Limit
1253	Titanium+Stainless Steel	164g	136kg / 300lbs
1253S	Stainless Steel	184g	136kg / 300lbs



1254

3-PRONG ROTATING BASE WITH ROTATING PYRAMID

Stainless steel 3-prong rotating base with titanium rotating pyramid. The 1254 (3-Prong Rotating Base with Rotating Pyramid) consists of 1221S (3-Prong Rotating Base) and 1215T (Rotating Pyramid).

Warranty: 2 year

Stainless steel 3-prong rotating base with stainless steel rotating pyramid. The 1254S (3-Prong Rotating Base with Rotating Pyramid) consists of 1221S (3-Prong Rotating Base) and 1225T (Rotating Pyramid).

Warranty: 2 year

P/N	Material	Product Weight	Weight Limit
1254	Titanium+Stainless Steel	158g	136kg / 300lbs
1254S	Stainless Steel	168g	136kg / 300lbs



WaterProof

All ST&G Titanium components are waterproof. (If exposed to salt water, exercise proper care post exposure by thoroughly washing and drying the titanium product).



Connectors



Lamination Dummy for 4-Ear Connector, Pyramid

1220

4-EAR CONNECTOR, PYRAMID

The 4-ear connector provides an option for a one step lamination into a transtibial socket. A lamination cover is included with every 4-ear connector. Titanium, aluminum, or stainless steel provides a strong and durable quality product.

- ① **1220T** Titanium 4-Hole Connector, Pyramid
- ② **1220S** Stainless Steel 4-Hole Connector, Pyramid
- ③ **1220A** Aluminum 4-Hole Connector, Pyramid

Warranty: 2 year

P/N	Material	Product Weight	Weight Limit
① 1220T	Titanium	55g	170kg / 375lbs
② 1220S	Stainless Steel	97g	136kg / 300lbs
③ 1220A	Aluminum	63g	114kg / 250lbs

REPLACEMENT PARTS	
P/N	Description
LD	Lamination Dummy for 4-Ear Connector, Pyramid



WaterProof

All ST&G Titanium components are waterproof. (If exposed to salt water, exercise proper care post exposure by thoroughly washing and drying the titanium prouct).

MODULAR COMPONENTS

Connectors



Lamination Dummy for 4-Ear Connector, Pyramid

1230

4-EAR CONNECTOR WITHOUT PYRAMID HOLE

The 4-ear titanium connector without pyramid hole provides a one step lamination into a transtibial socket. It includes a lamination cover. It provides more strength than the 1220T. The 1230T is manufactured by a forged and machined combination resulting in a strong and light weight product.

Warranty: 2 year

P/N	Material	Product Weight	Weight Limit
1230T	Titanium	58g	170kg / 375lbs

REPLACEMENT PARTS

P/N	Description
LD	Lamination Dummy for 4-Ear Connector, Pyramid



1255

3-PRONG PYRAMID CONNECTOR

This 3-Prong Pyramid Connector is used for lamination onto transfemoral socket.

Warranty: 2 year

P/N	Material	Product Weight	Weight Limit
1255S	Stainless Steel	127g	100kg / 220lb



375 lbs System

①



375lbs System

① 1209C – Heavy Duty Carbon Tube

The 1209C carbon tube has a diameter of 30mm and length of 305mm.

Warranty: 2 year

② 3212T – Heavy Duty Tube Clamp

The heavy duty 30mm tube clamp adapter is designed for an optimum strength while maintaining low weight. A forged and machined combination resulting in a strong and light weight product.

Warranty: 2 year

③ 3230T – Heavy Duty 4-ear Connector, Pyramid

The heavy duty 4-ear connector provides an option for a one step lamination into a transtibial socket. The 3230T is manufactured by a forged and machined combination resulting in a strong and light weight product.

Warranty: 2 year

②



④ 3231T – Heavy Duty SACH Foot Adapter

The heavy duty foot adapter has a shorter flange providing better strength with reducing weight. The 3231T is manufactured by a forged and machined combination resulting in a strong and light weight product. A foot bolt is provided with every adapter.

Warranty: 2 year

③



④



P/N	Material	Product Weight	Weight Limit
① 1209C	Carbon	79g	170kg / 375lbs
② 3212T	Titanium	128g	170kg / 375lbs
③ 3230T	Titanium	83g	170kg / 375lbs
④ 3231T	Titanium	117g	170kg / 375lbs

Torque Value	Torque (Nm)	Hex (mm)
② 3212T M6 Cap Screw	7 Nm	5mm wrench
② 3212T M8 Set Screw	15 Nm	4mm wrench
④ 3231T M10 Bolt	30 Nm	8mm wrench



WaterProof

All ST&G Titanium components are waterproof. (If exposed to salt water, exercise proper care post exposure by thoroughly washing and drying the titanium product).

MODULAR COMPONENTS

500 lbs System

①



500lbs System

① 5209C – Heavy Duty Carbon Tube

The 5209C carbon tube has a diameter of 34mm and length of 305mm.

Warranty: 2 year

② 5212T – Heavy Duty Tube Clamp

The heavy duty 34mm tube clamp adapter is designed for an optimum strength while maintaining low weight. A forged and machined combination resulting in a strong and light weight product.

Warranty: 2 year

③ 5220T – Heavy Duty 4-Ear Connector, Pyramid

The heavy duty 4-ear connector provides an option for a one step lamination into a transtibial socket. The 5220T is manufactured by a forged and machined combination resulting in a strong and light weight product.

Warranty: 2 year

②



③



P/N	Material	Product Weight	Weight Limit
① 5209C	Carbon	269g	227kg / 500lbs
② 5212T	Titanium	167g	227kg / 500lbs
③ 5220T	Titanium	141g	227kg / 500lbs

Torque Value	Torque (Nm)	Hex (mm)
② 5212T M6 Cap Screw	10 Nm	5mm wrench
② 5212T M10 Set Screw	20 Nm	5mm wrench



WaterProof

All ST&G Titanium components are waterproof. (If exposed to salt water, exercise proper care post exposure by thoroughly washing and drying the titanium prouct).



BK Kits - Ti, SS & Al



110T

TITANIUM BK KIT

Titanium BK Kit consists of 1212T (tube clamp) and 1211T (tube clamp assembly).

Warranty: 2 year

P/N	Material	Product Weight	Weight Limit
110T	Titanium	385g	136kg / 300lbs



110S

STAINLESS STEEL BK KIT

Stainless Steel BK Kit consists of 1212S (tube clamp) and 1211S (tube clamp assembly).

Warranty: 2 year

P/N	Material	Product Weight	Weight Limit
110S	Stainless Steel	472g	114kg / 250lbs



110A

ALUMINUM BK KIT

Aluminum BK Kit consists of 1212A (tube clamp) and 1211A (tube clamp assembly).

Warranty: 2 year

P/N	Material	Product Weight	Weight Limit
110A	Aluminum	390g	114kg / 250lbs



WaterProof

All ST&G Titanium components are waterproof. (If exposed to salt water, exercise proper care post exposure by thoroughly washing and drying the titanium product).

MODULAR COMPONENTS

BK Kits - Heavy Duty



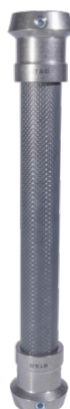
310T **375LBS BK KIT**

375lbs BK Kit consists of 3212T (tube clamp) x 2 pieces, 3230T (4-ear connector) and 1209C (carbon tube).

- 30mm

Warranty: 2 year

P/N	Material	Product Weight	Weight Limit
310T	Titanium / Carbon	441g	170kg / 375lbs



510T **500LBS BK KIT**

500lbs BK Kit consists of 5212T (tube clamp) x 2 pieces, 5220T (4-ear connector) and 5209C (carbon tube).

- 34mm

Warranty: 2 year

P/N	Material	Product Weight	Weight Limit
510T	Titanium / Carbon	744g	227kg / 500lbs



WaterProof

All ST&G Titanium components are waterproof. (If exposed to salt water, exercise proper care post exposure by thoroughly washing and drying the titanium product).

OSSEOINTEGRATION

EXCLUSIVE DISTRIBUTOR

ST&G USA Corporation is the exclusive Osseointegration distributor for the USA market, distributing both the LUCI Connector (OTN) and HERMLE Connector (MAC Surgical).



LUCI CONNECTOR

OTN



HERMLE CONNECTOR

MAC Surgical

Hermle CLAMP CONNECTOR



The **Hermle Clamp Connector** device is the main connector that is attached to the patient's prosthesis and allows the prosthesis to be attached to the dual cone on the end of the patient by attaching to 305137. Unlike the hex connector this can be taken off with no additional tools needed and operates just like a quick release bike seat.

- Titanium
- Warranty: 2 year



305101C CLAMP CONNECTOR TT

This connector is for **Transtibial** amputee. Also included in this connector is bushing (305138).



305105C CLAMP CONNECTOR LEFT

This connector is for transfemoral amputee on their **Left** side. Also included in this connector is bushing (305138).



305106C CLAMP CONNECTOR RIGHT

This connector is for transfemoral amputee on their **Right** side. Also included in this connector is bushing (305138).

Hermle HEX CONNECTOR



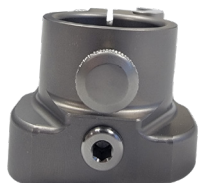
The **Hermle Hex Connector** is the main connector that is attached to the patient's prosthesis and allows the prosthesis to be attached to the dual cone on the end of the patient by attaching to 305024 and 305124.

- Titanium
- Warranty: 2 year



305101 HEX CONNECTOR TT

This connector is for **Transtibial** amputee. To remove the prosthesis from the end of your leg you will need an 8mil hex key.



305105 HEX CONNECTOR LEFT

This connector is for transfemoral amputee on their **Left** side. To remove the prosthesis from the end of your leg you will need an 8 mil hex key.



305106 HEX CONNECTOR RIGHT

This connector is for transfemoral amputee on their **Right** side. To remove the prosthesis from the end of your leg you will need an 8 mil hex key.



Hermle



305231

CLAMP CONNECTOR LEVER ARM & NUT

- Titanium
- Warranty: 2 year



305024

TAPER SLEEVE FOR HEX CONNECTOR

This tap sleeve is for the hex connector and is attached to the bushing (305124) which is then attached to the dual cone on the patient. These two devices Combined are the safety mechanism for the connector.

- Titanium
- Warranty: 1 year



305137

TAPER SLEEVE FOR CLAMP CONNECTOR

This taper sleeve is for the clamp connector and is connected directly to the dual cone by using the abutment screw (305064). This is the part that the connector will attach to.

- Titanium
- Warranty: 1 year



305124

BUSHING TO HEX CONNECTOR

This bushing is for the hex connector and is attached to the tap sleeve (305024) which is then attached to the jewel on the patient. These two devices Combined other safety mechanism for the connector.

- Titanium



305138

BUSHING CLAMP CONNECTOR 0 DEG

This is the safety mechanism for The clamp connector which the safety pins will go into. This pushing is placed inside the clamp connector.

- Titanium

Hermle



305064 ABUTMENT SCREW

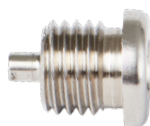
This is the main screw that will connect the abutment onto the patient's dual cone. This group will be used on both the hex key system and also the clamp connect the system.

- Stainless steel



305150 SAFETY PIN FOR HEX CONNECTOR 4MM

- Stainless steel



305130 SAFETY PIN FOR CLAMP CONNECTOR 4MM

- Stainless steel



324001 TOOL KIT RIGHT HANDED THREAD

- Warranty: 2 year



324001-LH TOOL KIT LEFT HANDED THREAD

- Minimum order of 10
- Warranty: 2 year



305600 HERMLE SILICONE COVER



OTN Luci

The Luci is innovative. Its design allows for a seamless connection with the prosthesis. A four-point screw ensures a strong attachment of the connector. The closure and swivel connection make it possible to quickly connect and disconnect.



OTNI 17

LUCI CONNECTOR SET (EXCLUDES OFFSET PLATE)

- Titanium
- Warranty: 2 year



OTNI 17=FEM

LUCI FEMALE SET (EXCLUDES OFFSET PLATE)

- Titanium
- Warranty: 2 year



OTNI 17=LIP

LUCI LIP SET (LIP, LOCK NUT, M6 SHAFT SCREW, AXIS, GRIT PLATE, M3 SCREWS) - SPARE PART SET

- Titanium, Stainless steel, Bronze
- Warranty: 2 year



OTNI 1700

LUCI OFFSET PLATE 0MM

- Titanium
- Warranty: 2 year



OTNI 1710

LUCI OFFSET PLATE 10MM

- Titanium
- Warranty: 2 year



OTNI 1720

LUCI OFFSET PLATE 20MM

- Titanium
- Warranty: 2 year



OTNI 1706

LUCI M3 SCREWS

- Stainless Steel
- Warranty: 2 year

OTN Luci Fit Kit is available upon request (comes with all offset plates and connector options for patient fittings).



OTNI 1730K

LUCI OFFSET PLATE 30MM KINK 5"

- Titanium
- Warranty: 2 year



OTNI 1740

LUCI OFFSET PLATE 40MM

- Titanium
- Warranty: 2 year



OTNI 1740K

LUCI OFFSET PLATE 40MM KINK 12"

- Titanium
- Warranty: 2 year



OTNI 1750

LUCI OFFSET PLATE 50MM

- Titanium
- Warranty: 2 year



OTNI 1750K

LUCI OFFSET PLATE 50MM KINK 15"

- Titanium
- Warranty: 2 year



OTNI 1760

LUCI OFFSET PLATE 60MM

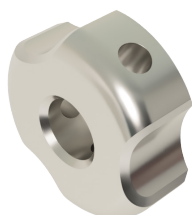
- Titanium
- Warranty: 2 year



OTNI 1760K

LUCI OFFSET PLATE 60MM KINK 15"

- Titanium
- Warranty: 2 year



OTNI 1703

LUCI LOCKNUT (+3 M3 SCREWS INCLUDED)

- Spare Part Set
- Stainless Steel
- Warranty: 2 year



OTNI 1422

OTNI M12X1 ABUTMENT SCREW

- Titanium
- Warranty: 2 year



OTNI

OTNI M14X2 ABUTMENT SCREW

- Titanium
- Warranty: 2 year



OTNI 1709

LUCI MALE PART

- Titanium
- Warranty: 2 year



OTNI 1707

LUCI GRIT PLATE

- Bronze
- Warranty: 2 year



OTNI 16

LUCI PULLER, DEINSTALLATION TOOL FOR LUCI MALE PART

- Stainless steel
- Warranty: 2 year



OTNIMC80MPEX

MALE PART EXTENDER, CUSTOM MADE

- Titanium
- Warranty: 2 year



OTNI 25

LUCI NIGHT CAP

- Warranty: 6 months



OTNI 90

TOOL BOX LUCI CONNECTOR *ALSO AVAILABLE FOR RENT

- Warranty: 2 year



ORBIS

ORBIS STOMA CAP

- Warranty: N/A

PROSTHETIC FEET





Feet



Spectra Sock



Note: When placing an order, please use the below formula.

1113-C (indicate category #)-size L or R

Example, if you were ordering a size 25, right foot, category 3, the part number would be: **1113-C3-25R**

Note: When ordering a brown foot shell, please add a "B" after the p/n: **1113-B-C3-25R**

*See Shoe Size Conversion Chart on page 108.

1113

NEXT STEP FOOT W/ GLIDE ANKLE

- 2 degrees of Dorsiflexion during swing
- 15 degrees of Plantarflexion in stance
- Heel contact torque reduction
- Ensures knee stability
- NEXTSTEP promotes propulsion
- For the active K2 wearer
- Comes with a foot shell, spectra sock
- Foot shell comes in two colors: beige & brown
- Ships standard with beige foot shell unless part number indicates brown foot shell
- Warranty: 2 year

PDAC Approved HCPCS Code(s): L5968 & L5972

- To download PDAC Letter please visit our website at www.stngco.com

Specifications:

- Sizes: 23-28cm
- Combined weight of Foot Size 26: 1.12lbs (17.9oz/507.45g)
- Build Height to mid-dome of the ankle: 3.8 inches (96.5mm)
- Heel Height: 3/8" (10mm)
- Maximum Patient Weight: 125kg/275lb

P/N	FOOT SHELL REPLACEMENT
1114-SH-SIZE(R/L)	Beige Foot Shell REPLACEMENT
1114-B-SH-SIZE(R/L)	Brown Foot Shell REPLACEMENT

P/N	SPECTRA SOCK
1FJ-20	Spectra Sock Size 23-25
1FJ-10	Spectra Sock Size 26-28

Size Category	4	5	6
Category based on patient's weight	Up to - 175lbs	175lbs - 220lbs	220lbs - 275lbs
23 / 24	X	X	
25 / 26	X	X	X
27 / 28		X	X

Activity Weight	50-60kg	60-70kg	75-90kg	90-105kg	105-125kg
Low	2	2	2	3	4
Moderate	2	2	3	4	5
High	2	3	4	5	-

*Note: Approximate weight and build height taken on size 26.
Comes with a split toe.*

PROSTHETIC FEET

Feet



Patent Pending

Two spring loaded independently engineered toes make up the unique functionality of this foot.



Spectra Sock

Comes with foot shell, spectra sock and three interchangeable heel bumpers.
(Foot shell comes in two colors: beige & brown)

Note: When placing an order, please use the below formula.

1114-C (indicate category #)-size L or R

Example, if you were ordering a size 25, right foot, category 3, the part number would be: **1114-C3-25R**

Note: When ordering a brown foot shell, please add a "B" after the p/n: 1114-B-C3-25R

1114 TOE FLEX

Designed for a purpose, Toe Flex offers the functional movement of an anatomical ankle and foot. The Innovative design of the Toe Flex, promotes a functional and dynamic motion through the split carbon heel, multi-axial ankle, and independent split toe features which provides additional leverage for improved balance and smoothness during gait.

Specifications:

- Sizes: 23-28cm
- User Weight Rating: 125 kg (275 lbs)
- Heel Height: 10 mm (3/8 in)
- Connector: Male pyramid
- Warranty: 2 year

PDAC approved HCPCS Code(s): L5979

- To download PDAC Letter please visit our website at www.stngco.com

P/N	FOOT SHELL REPLACEMENT
1114-SH-SIZE(R/L)	Beige Foot Shell REPLACEMENT
1114-B-SH-SIZE(R/L)	Brown Foot Shell REPLACEMENT

P/N	SPECTRA SOCK
1FJ-20	Spectra Sock Size 23-25
1FJ-10	Spectra Sock Size 26-28

P/N	TOE FLEX HEEL BUMPERS
1114-Y	Yellow Bumper
1114-R	Red Bumper
1114-B	Blue Bumper

TOE FLEX BUMPER CHART									
Blue									
Red									
Yellow									
Body Weight	50kg	60kg	70kg	80kg	90kg	100kg	110kg	120kg	125kg

*See Shoe Size Conversion Chart on page 108.

TO ORDER CALL: 714-524-0663 • FAX: 714-364-8113 • EMAIL: orders@stngco.com



Feet



Spectra Sock

Comes with foot shell, spectra sock and three interchangeable heel bumpers.

*Foot shell, spectra sock, wedges, heel splitter, and toe cushion included. Foot Shell comes beige color only.

Note: When placing an order, please use the below formula.

1123-C (indicate category #) - size L or R

Example, if you were ordering a size 25, right foot, category 3, the part number would be: **1123-C3-25R**

C = CUSTOM ORDER (Call for pricing)

*See Shoe Size Conversion Chart on page 108.

1123

ENDURANCE CONTOUR

Ideal for active users, the Endurance Contour foot ensures a smoother gait without the energy loss typically associated with carbon fiber foot systems. Its unique angle-top and non-flat keel design increases the length of the carbon fiber spring, which maximizes energy return, and ensures smooth walking motion. The split-keel provides excellent inversion/eversion, allowing compliance to walk on uneven or canted terrain. The Endurance is light-weight, simple to assemble and has a cosmesis friendly profile which makes it easy to cover.

- Increased length of carbon fiber spring for more energy in a manageable build height
- Split keel design provides inversion/eversion
Full-length heel provides a stable base of support, especially during heel contact.
- Design helps reduce “Dead Spots” for smoother waling during stance phase
- Heel height is 10mm / 3/8in
- Warranty: 3 year

PDAC approved HCPCS Code(s): L5981

- To download PDAC Letter please visit our website at www.stngco.com

P/N	ENDURANCE FOOT SHELL REPLACEMENT
1115-SH	Endurance Foot Shell REPLACEMENT - Sizes 23-29

P/N	SPECTRA SOCK
1FJ-20	Spectra Sock Size 23-25
1FJ-10	Spectra Sock Size 26-28

Activity Weight	50-60kg	60-75kg	75-90kg	90-105kg	105-125kg
Low	1	1	2	3	-
Moderate	1	2	3	4	4
High	2	3	4	5	5

Size Category	2	3	4	5
23	X	X	C	C
24	X	X	C	C
25	X	X	X	C
26	X	X	X	X
27	C	X	X	X
28	C	X	X	X
29	C	X	X	X

PROSTHETIC FEET

Feet

Available 2026

1115

ENDURANCE LOW PROFILE



The Endurance LP provides a combination of comfort and dynamics to users offering natural gait with less fatigue and ultimately less strain on the lower back and sound side. The split keel and heel design enhance Eversion and Inversion compliance. The Carbon fiber construction promotes conversion of weight bearing energy input into energy output.

The Endurance LP is light-weight, simple to assemble and has a cosmesis friendly profile which makes it easy to cover.

The Endurance LP is designed for users with long residual limbs that do not have enough clearance for the Endurance.

PDAC approved HCPCS Code(s): L5981

- To download PDAC Letter please visit our website at www.stngco.com



Spectra Sock

Comes with foot shell, spectra sock and three interchangeable heel bumpers.

*Foot shell, spectra sock, wedges, heel splitter, and toe cushion included. Foot Shell comes beige color only.

Note: When placing an order, please use the below formula.

1115-C (indicate category #) - size L or R

Example, if you were ordering a size 25, right foot, category 3, the part number would be: **1115-C3-25R**

C = CUSTOM ORDER (Call for pricing)

*See Shoe Size Conversion Chart on page 108.

P/N	1115
Category	2-5
Sizes	23-29
Weight of Foot Size 27	585g w/ Foot Cover
Build Height of Foot Size 27	68mm w/ Foot Cover
Heel Height	10mm
Maximum Patient Weight	125kg
Warranty	3 Year

P/N	ENDURANCE FOOT SHELL REPLACEMENT
1115-SH	Endurance Foot Shell REPLACEMENT - Sizes 23-29

P/N	SPECTRA SOCK
1FJ-20	Spectra Sock Size 23-25
1FJ-10	Spectra Sock Size 26-28

Activity Weight	50-60kg	60-75kg	75-90kg	90-105kg	105-125kg
Low	2	2	2	3	4
Moderate	2	2	3	4	5
High	2	3	4	5	-

Size Category	2	3	4	5
23	X	X	C	C
24	X	X	C	C
25	X	X	X	C
26	X	X	X	X
27	C	X	X	X
28	C	X	X	X
29	C	X	X	X

TO ORDER CALL: 714-524-0663 • FAX: 714-364-8113 • EMAIL: orders@stngco.com



Feet



Spectra Sock

Comes with foot shell, spectra sock and three interchangeable heel bumpers.

*Foot shell, spectra sock, wedges, heel splitter, and toe cushion included. Foot Shell comes beige color only.

Note: When placing an order, please use the below formula.

1116-C (indicate category #) - size L or R

Example, if you were ordering a size 25, right foot, category 3, the part number would be: **1116-C3-25R**

C = CUSTOM ORDER (Call for pricing)

*See Shoe Size Conversion Chart on page 108.

1116 ENDURANCE

The Endurance provides a combination of comfort and dynamics to users offering natural gait with less fatigue and ultimately less strain on the lower back and sound side. The split keel and heel design enhance Eversion and Inversion compliance. The Carbon fiber construction promotes conversion of weight bearing energy input into energy output.

The Endurance is light-weight, simple to assemble and has a cosmetic friendly profile which makes it easy to cover.

PDAC approved HCPCS Code(s): L5981

- To download PDAC Letter please visit our website at www.stngco.com

P/N	1116
Category	2-5
Sizes	23-29
Weight of Foot Size 27	720g w/ Foot Cover
Build Height of Foot Size 27	170mm w/ Foot Cover
Heel Height	19mm and 10mm
Maximum Patient Weight	125kg
Warranty	3 Year

P/N	ENDURANCE FOOT SHELL REPLACEMENT
1115-SH	Endurance Foot Shell REPLACEMENT - Sizes 23-29

P/N	SPECTRA SOCK
1FJ-20	Spectra Sock Size 23-25
1FJ-10	Spectra Sock Size 26-28

Activity Weight	50-60kg	60-75kg	75-90kg	90-105kg	105-125kg
Low	2	2	2	3	4
Moderate	2	2	3	4	5
High	2	3	4	5	-

Size Category	2	3	4	5
23	X	X	C	C
24	X	X	C	C
25	X	X	X	C
26	X	X	X	X
27	C	X	X	X
28	C	X	X	X
29	C	X	X	X

PROSTHETIC FEET

Feet

ProStep
// VS



Spectra Sock

Comes with foot shell, spectra sock and three interchangeable heel bumpers.

*Foot shell, spectra sock, wedges, heel splitter, and toe cushion included. Foot Shell comes beige color only.

Note: When placing an order, please use the below formula.

1130 (indicate category #)-size L or R

Example, if ordering a size 23, left foot, the part number would be: **1130-23L**

1130 PRO STEP VS

Designed for use by moderate impact K3 lower limb amputee ambulators with moderate activity level. Pro-Step VS has a weight limit of 275 lbs. (125 kg). with a 12.7mm / 0.5-inch Vertical shock for impact reduction incorporated with a progressive carbon fiber keel structure. The split Carbon keel allows +/- 7 degrees of inversion and eversion movement of the foot. There is an additional carbon plate that progressively compresses during the stance phase which enhances energy return, yet allows for comfort while walking.

PDAC approved HCPCS Code(s): L5987

- To download PDAC Letter please visit our website at www.stngco.com

P/N	1130
Category	1-5
Sizes	23-28
Weight of Foot Size 27	740g w/ Foot Shell
Build Height of Foot Size 27	160mm w/ Foot Shell
Heel Height	10mm
Maximum Patient Weight	125kg
Warranty	2 Year

P/N	ENDURANCE FOOT SHELL REPLACEMENT
1130-SH	ProStep VS foot shell REPLACEMENT Sizes 23-28

P/N	SPECTRA SOCK
1FJ-20	Spectra Sock Size 23-25
1FJ-10	Spectra Sock Size 26-28

Activity Weight	50-60kg	60-75kg	75-90kg	90-105kg	105-125kg
Low	1	1	2	3	-
Moderate	1	2	3	4	4
High	2	3	4	5	5

Size Category	1	2	3	4	5
23	X	X	-	-	-
24	X	X	X	-	-
25	X	X	X	X	-
26	X	X	X	X	-
27	-	-	X	X	X
28	-	-	X	X	X

*See Shoe Size Conversion Chart on page 108.

TO ORDER CALL: 714-524-0663 • FAX: 714-364-8113 • EMAIL: orders@stngco.com



Feet



Spectra Sock

Comes with foot shell, spectra sock and three interchangeable heel bumpers.
(Foot shell comes in two colors: beige & brown)

Note: When placing an order, please use the below formula.

1120 (indicate category #)-size L or R

Example, if ordering a size 23, left foot, the part number would be: **1120-23L**

Note: When ordering a brown foot shell, please add a "B" after the p/n: 1120-B-23L

Available 2026

1120

MT FLEX WITH GLIDE ANKLE



- 2 degrees of Dorsiflexion during swing
- 15 degrees of Plantarflexion at heel contact from the ankle, and additional range from the split carbon heel
- Increased proprioception and balance walking in undulating terrain
- Heel contact torque reduction
- Ensures knee stability
- Warranty: 1 year

PDAC approved HCPCS Code(s): L5968 + L5981

- To download PDAC Letter please visit our website at www.stngco.com

P/N	FOOT SHELL REPLACEMENT
1114-SH-SIZE(R/L)	Biege Foot Shell REPLACEMENT
1114-B-SH-SIZE(R/L)	Brown Foot Shell REPLACEMENT

P/N	SPECTRA SOCK
1FJ-20	Spectra Sock Size 23-25
1FJ-10	Spectra Sock Size 26-28

P/N	TOE FLEX HEEL BUMPERS
1114-Y	Yellow Bumper
1114-R	Red Bumper
1114-B	Blue Bumper

TOE FLEX BUMPER CHART									
Blue					Hardness (Shore A) 50				
Red			Hardness (Shore A) 40						
Yellow	Hardness (Shore A) 30								
Body Weight	50kg	60kg	70kg	80kg	90kg	100kg	110kg	120kg	125kg

*See Shoe Size Conversion Chart on page 108.

PROSTHETIC FEET

Feet



1119 PRIME

PRIME CARBON FIBER FOOT

The Prime provides K2 users a cost-effective, yet highly-functional foot with a variety of features utilizing high-end technology. The walking friendly design ensures extended flat foot duration for added ease of walking with increased stability, and extremely smooth roll over with the curved keel.

Specifications:

- Sizes: 23-28
- User Weight Rating: 125 kg (275 lbs)
- Heel Height: 10 mm (3/8 in)
- Connector: Integrated pyramid
- Warranty: 2 year

Suggested LCode Code(s): L5972

Note: The above codes are suggested codes and accurate coding lies solely with the provider treating the patient.



P/N	FOOT SHELL REPLACEMENT
1119-SH-XXL/R	Foot Shell size 23-28 L/R



Spectra Sock

P/N	SPECTRA SOCK
1FJ-20	Spectra Sock Size 23-25
1FJ-10	Spectra Sock Size 26-28

Comes with foot shell and spectra sock.

*See Shoe Size Conversion Chart on page 108.

TO ORDER CALL: 714-524-0663 • FAX: 714-364-8113 • EMAIL: orders@stngco.com



Feet



1118 COMFORT STEP



The Prime provides K2 users a cost-effective, yet highly-functional foot with a variety of features utilizing high-end technology. The walking friendly design ensures extended flat foot duration for added ease of walking with increased stability, and extremely smooth roll over with the curved keel.

Specifications:

- Sizes: 23-28
- User Weight Rating: 125 kg (275 lbs)
- Heel Height: 10 mm (3/8 in)
- Connector: Integrated pyramid
- Warranty: 2 year

Suggested LCode Code(s): L5972 + L5986

Note: The above codes are suggested codes and accurate coding lies solely with the provider treating the patient.



P/N	FOOT SHELL REPLACEMENT
1114-SH-SIZE(R/L)	Beige Foot Shell REPLACEMENT
1114-B-SH-SIZE(R/L)	Brown Foot Shell REPLACEMENT



Spectra Sock

P/N	SPECTRA SOCK
1FJ-20	Spectra Sock Size 23-25
1FJ-10	Spectra Sock Size 26-28

Comes with foot shell and spectra sock.
(Foot shell comes in two colors: beige & brown)

*See Shoe Size Conversion Chart on page 108.

PROSTHETIC FEET

Feet



1117



Spectra Sock

Comes with foot shell, spectra sock and three interchangeable heel bumpers.
(Foot shell comes in two colors: beige & brown)

1122 / 1117

SYMES FOOT

Symes with Ultra Low Build Height

- Integrated Titanium Pyramid (1117) or 36mm Thread Adapter (1122)
- Composite keel conforms with forefoot inversion/eversion
- Low Build Height of 45mm or 39mm with foot shell
- Comes with foot shell and spectra sock
- 10mm heel height
- Warranty: 2 year

PDAC approved HCPCS Code(s): L5972

- To download PDAC Letter please visit our website at www.stngco.com

P/N	FOOT SHELL REPLACEMENT
1114-SH-SIZE(R/L)	Beige Foot Shell REPLACEMENT
1114-B-SH-SIZE(R/L)	Brown Foot Shell REPLACEMENT

P/N	SPECTRA SOCK
1FJ-20	Spectra Sock Size 23-25
1FJ-10	Spectra Sock Size 26-28

P/N	Foot Size	Build Height	Weight Limit	Split Toe
1117 (Pyramid)	23-28	45mm / 1.8in	125kg / 275lb	No
1122 (Threaded)	23-28	39mm / 1.5in	125kg / 275lb	No

Activity Weight	50-60kg	60-70kg	75-90kg	90-105kg	105-125kg
Low	2	2	2	3	4
Moderate	2	2	3	4	5
High	2	3	4	5	-

*Note: Approximate weight and build height taken on size 26.
Comes with a split toe.*

Note: When placing an order, please use the below formula.

1122-C (indicate category #)-size L or R

Example, if you were ordering a size 25, right foot, category 3, the part number would be: **1122-C3-25R**

Note: When ordering a brown foot shell, please add a "B" after the p/n: 1122-B-C3-25R

**See Shoe Size Conversion Chart on page 108.*

Size Category	4 (80kg / 175lb)	5 (100kg / 220lb)	6 (125kg / 275lb)
Category based on patient's weight	Up to 175lbs	100lbs - 220lbs	220lbs - 275lbs
23	X	X	
24	X	X	
25		X	X
26		X	X
27		X	X
28		X	X

TO ORDER CALL: 714-524-0663 • FAX: 714-364-8113 • EMAIL: orders@stngco.com



Feet



Spectra Sock

Comes with foot shell, spectra sock and three interchangeable heel bumpers.
(Foot shell comes in two colors: beige & brown)

Note: When placing an order, please use the below formula.

1112-C (indicate category #)-size L or R

Example, if you were ordering a size 25, right foot, category 3, the part number would be: **1112-C3-25R**

Note: When ordering a brown foot shell, please add a "B" after the p/n: 1112-B-C3-25R

1112

NEXT STEP KEEL ONLY

Symes with Ultra Low Build Height

- Composite keel conforms with forefoot inversion/eversion
- Ultra Low Build Height with foot shell
- 10mm heel height
- Comes with Foot Shell and Spectra Sock
- Warranty: 2 year

PDAC approved HCPCS Code(s): L7972

- To download PDAC Letter please visit our website at www.stngco.com

P/N	FOOT SHELL REPLACEMENT
1114-SH-SIZE(R/L)	Beige Foot Shell REPLACEMENT
1114-B-SH-SIZE(R/L)	Brown Foot Shell REPLACEMENT

P/N	SPECTRA SOCK
1FJ-20	Spectra Sock Size 23-25
1FJ-10	Spectra Sock Size 26-28

P/N	Foot Size	Build Height	Weight Limit	Split Toe
1112	23-28	12mm / 0.5in	125kg / 275lb	No

Activity Weight	50-60kg	60-70kg	75-90kg	90-105kg	105-125kg
Low	2	2	2	3	4
Moderate	2	2	3	4	5
High	2	3	4	5	-

*Note: Approximate weight and build height taken on size 26.
Comes with a split toe.*

Size Category	4 (80kg / 175lb)	5 (100kg / 220lb)	6 (125kg / 275lb)
Category based on patient's weight	Up to 175lbs	100lbs - 220lbs	220lbs - 275lbs
23	X	X	
24	X	X	
25		X	X
26		X	X
27		X	X
28		X	X

*See Shoe Size Conversion Chart on page 108.

PROSTHETIC FEET

Feet



1110

DYNAMIC STEP FOOT

CARBON FIBER Energy Storing K3 Foot

- Energy storing K3 foot
- Good heel strike and toe off resistance
- Comes with foot shell
- Warranty: 1 year

Suggested L-Code: L5976

Note: The above codes are suggested codes and accurate coding lies solely with the provider treating the patient.

P/N	Product Description	Product Weight	Build Height
1110	Dynamic Step Foot	590g	54mm / 2.13in

Note: Approximate weight and build height taken on size 26



Size	STANDARD (FS) Weight Limit- 70kg / 155 lbs	STANDARD (FS) Weight Limit- 90kg / 200 lbs
23 Left	1110=23L-155	
23 Right	1110=23R-155	
24 Left	1110=24L-155	
24 Right	1110=24R-155	
25 Left		1110=25L-200
25 Right		1110=25R-200
26 Left		1110=26L-200
26 Right		1110=26R-200
27 Left		1110=27L-200
27 Right		1110=27R-200
28 Left		1110=28L-200
28 Right		1110=28R-200

**See Shoe Size Conversion Chart on page 108.*

TO ORDER CALL: 714-524-0663 • FAX: 714-364-8113 • EMAIL: orders@stngco.com



Feet



1109

MOTION STEP FOOT

- Multi axial ankle motion
- Variable ankle motion resistance
- Pyramid version for ankle joint
- K1-K3 activity level foot
- Sizes: 22-27
- Warranty: 1 year

Suggested L-Code: ANKLE L5986 / FOOT L5972

- K1-K2 activity level – weight limit up to 125kg (275lbs)
- K3 activity level – MAXIMUM WEIGHT LIMIT up to 100kg (220lbs)

Note: The above codes are suggested codes and accurate coding lies solely with the provider treating the patient.

P/N	Product Description	Product Weight	Build Height
1109	Motion Step Foot	794g	60mm / 2.36in

*Note: Approximate weight and build height taken on size 26.
Comes with split toe.*

Size	MOTION STEP Weight Limit- 60kg to 80kg 132lbs to 176lbs	MOTION STEP Weight Limit- 80kg to 100kg 176lbs to 220lbs	MOTION STEP Weight Limit- 100kg to 125kg 220lbs to 275lbs
22 Left	1109=22L-176	1109=22L-220	1109=22L-275
22 Right	1109=22R-176	1109=22R-220	1109=22R-275
23 Left	1109=23L-176	1109=23L-220	1109=23L-275
23 Right	1109=23R-176	1109=23R-220	1109=23R-275
24 Left	1109=24L-176	1109=24L-220	1109=24L-275
24 Right	1109=24R-176	1109=24R-220	1109=24R-275
25 Left	1109=25L-176	1109=25L-220	1109=25L-275
25 Right	1109=25R-176	1109=25R-220	1109=25R-275
26 Left	1109=26L-176	1109=26L-220	1109=26L-275
26 Right	1109=26R-176	1109=26R-220	1109=26R-275
27 Left	1109=27L-176	1109=27L-220	1109=27L-275
27 Right	1109=27R-176	1109=27R-220	1109=27R-275

REPLACEMENT Rubber Ring for Motion Step Foot

P/N	Product Image	Weight Limit
1109SNB-Y		100kg / 220lbs = Yellow
1109SNB-B		125kg / 275lbs = Blue

**See Shoe Size Conversion Chart on page 108.*

PROSTHETIC FEET

Feet



1106 EZ-STEP FOOT

- High-tech performance with simplicity
- Optimum flexibility and toe response
- Soft heel cushion with smooth rollover
- Easy adaptation for amputees with lower activity level
- Warranty: 1 year

PDAC approved HCPCS code(s): L5972

- To download PDAC Letter please visit our website at www.stngco.com

P/N	Product Description	Weight Limit	Product Weight	Build Height
1106	EZ STEP FOOT	100kg / 220lbs	597g	83mm / 3.27in

Note: Approximate weight and build height taken on size 26

Size	Weight Limit-100kg / 220 lbs	Size	Weight Limit-100kg / 220 lbs
22 Left	1106=22L-220	26 Left	1106=26L-220
22 Right	1106=22R-220	26 Right	1106=26R-220
23 Left	1106=23L-220	27 Left	1106=27L-220
23 Right	1106=23R-220	27 Right	1106=27R-220
24 Left	1106=24L-220	28 Left	1106=28L-220
24 Right	1106=24R-220	28 Right	1106=28R-220
25 Left	1106=25L-220	29 Left	1106=29L-220
25 Right	1106=25R-220	29 Right	1106=29R-220

FLEXIBLE KEEL FOR K2 ACTIVITY

Integrated foam for added durability

Multiple keel for compounding flexibility



Big heel cushion for comfort

**See Shoe Size Conversion Chart on page 108.*

TO ORDER CALL: 714-524-0663 • FAX: 714-364-8113 • EMAIL: orders@stngco.com



Feet



HYDRO STEP FOOT

1129 HYDRO STEP FOOT

Walk barefoot with confidence! The HydroStep Foot has a textured sole great for the shower or for outdoor fun. Please exercise caution on slippery surfaces.

- Designed with zero heel height
- High Tech composite for optimized movement
- Textured sole for improved grip
- Integrated pyramid
- Split toe design
- Warranty: 1 year

Suggested L-Code: L5972

Note: The above codes are suggested codes and accurate coding lies solely with the provider treating the patient.

P/N	Product Description	Weight Limit	Product Weight	Build Height
1129	HYDRO STEP FOOT	125kg / 275lb	781g	97mm / 3.82in

Note: Approximate weight and build height taken on size 27

*See Shoe Size Conversion Chart on page 108.



Feet



①



②



1101

SINGLE AXIS FOOT

The single axis foot is to be used with single axis ankle joints (1232S/1233S, 1232A/1233A).

- Activity level K1 +
- Warranty: 1 year

Suggested L-Code: L5974

Note: The above codes are suggested codes and accurate coding lies solely with the provider treating the patient.

P/N	Product Description	Weight Limit	Product Weight	Build Height
1101	1101 = 21 – 30 Left / Right	100kg / 220lbs	430g	62mm / 2.44in

Note: Approximate weight and build height taken on size 26

REPLACEMENT PARTS	
P/N	Description
1101-1	Connection Cap. Size 22 thru 28.

1232

SINGLE AXIS FOOT ADAPTER

① Stainless Steel Single Axis Foot Adapter

The articulating ankle joint comes with plantar flexion stop made of elastic member, thus providing elastic plantar flexion stop.

Warranty: 1 year

② Aluminum Single Axis Foot Adapter

The articulating ankle joint comes with plantar flexion stop made of elastic member, thus providing elastic plantar flexion stop.

Warranty: 1 year

P/N	Foot Size	Material	Product Weight	Weight Limit
② 1232S 1233S	Small (21-25cm) Large (26-30cm)	Stainless Steel	305g 317g	100kg / 220lbs
③ 1232A 1233A	Small (21-25cm) Large (26-30cm)	Aluminum	223g 227g	100kg / 220lbs

REPLACEMENT PARTS	
P/N	Description
1232-1	Single Component Pack for Single Axis Ankle

Included in delivery : 1 lower joint bushing, 1 rubber bumper, 2 nuts, 1 anti rotation bridge.

*See Shoe Size Conversion Chart on page 108.



Feet



1150 500 FOOT (SACH)

The Heavy Duty SACH 500 FOOT is designed for users who cannot use a standard weight rating SACH foot.

This foot is not designed for high impact sports or activities, such as construction, or exposure to water.

Rated for use with ST&G 500lb. System.

- Integrated ST&G 500lb Rated Titanium SACH Adapter
- 10mm (3/8") Heel Rise
- 14mm (9/16") Integrated Foot Bolt
- Extra Firm Heel Cushion and Split Toe Standard
- Rated up to 227kg / 500lb
- Sizes 26 – 30cm
- 86mm Build Height (27cm)
- Warranty: 1 year

812g (27cm)

500 pound SACH foot must be paired with 510T 500lbs BK Kit.

Failure to do so could void warranty due to possible incompatibility of componentry.

Suggested L-Code: L5970

Note: The above codes are suggested codes and accurate coding lies solely with the provider treating the patient.

Activity Weight	50-60kg	60-70kg	75-90kg	90-105kg	105-125kg
Low	2	2	2	3	4
Moderate	2	2	3	4	5
High	2	3	4	5	-

*Note: Approximate weight and build height taken on size 26.
Comes with a split toe.*

Size	Build Height (w/ Foot Shell)	Weight Limit	Split Toe
26-30	82.5mm / 2.85in	227kg / 500lb	No

**See Shoe Size Conversion Chart on page 108.*

Feet



①



②



③



Bolt for P/N 1231

1102 SACH FOOT

Internal heel wedge provides soft heel strike.

- Activity level K1 +
- Warranty: 1 year

Suggested L-Code: L5970

Note: The above codes are suggested codes and accurate coding lies solely with the provider treating the patient.

P/N	Product Description	Weight Limit	Product Weight	Build Height
1102	1102 = 21 – 30 Left / Right	100kg / 220lbs	580g	72.5mm / 2.85in

*Note: Approximate weight and build height taken on size 26.
Heel height is 3/8 inch.*

1231 SACH FOOT ADAPTER

① Titanium SACH Foot Adapter

The titanium foot adapter has a shorter flange providing better strength with reducing weight. The 1231T is manufactured by a forged and machined combination resulting in a strong and light weight product. A foot bolt is provided with every adapter.

Warranty: 2 year

② Stainless Steel SACH Foot Adapter

The stainless steel foot adapter is manufactured with high strength stainless steel alloy resulting in a strong and light weight product. A foot bolt is provided with every adapter.

Warranty: 2 year

③ Aluminum SACH Foot Adapter

The aluminum foot adapter is manufactured by a forged and machined combination resulting in a strong and light weight product. The flange is manufactured with stainless steel to reduce fatigue at the attachment site. A foot bolt is provided with every adapter.

Warranty: 2 year

P/N	Material	Product Weight	Weight Limit
① 1231T	Titanium	80g	136kg / 300lbs
② 1231S	Stainless Steel	112g	136kg / 300lbs
③ 1231A	Aluminum	105g	114kg / 250lbs

REPLACEMENT PARTS

P/N	Description
1231-1	Bolt for P/N 1231

Type	Torque (Nm)	Hex (mm)
M10 Cap Screw (Attachment Bolt)	30 Nm	8mm wrench

**See Shoe Size Conversion Chart on page 108.*



Tools



TRI WRENCH

ST&G 3-WAY ALLEN WRENCH

With the three most common hex wrenches in your hand at one time, convenience is always at hand.

P/N	Size
Tri Wrench	4, 5 and 6mm hex wrench size



4200

FOOT SHELL REMOVAL TOOL

P/N	Description
4200	Foot Shell Removal Tool



4040

EZ CUTTER KNIFE

Designed for cutting C-FORM & R-FORM

- The safest utility cutter on the market today
- Reduce workplace lacerations
- Provides a recessed blade which eliminates injuries
- Perfect for cutting through C-FORM AFO Casts
- CUT AT A SLIGHT ANGLE

P/N	Description
4040-st	EZ CUTTER - Standard
4040-sm	EZ CUTTER - Small



Note: Recommend apply Loctite 242 to all screws and bolt.

P/N	TYPE	Torque (Nm)	Hex (mm)
1212T, 1222T, 3212T	M6 Cap Screw	7 Nm	5mm wrench
1212MS, 1219T, 1252T/S, 1751T	M5 Cap Screw	7 Nm	4mm wrench
1212S	M6 Cap Screw	8 Nm	5mm wrench
1212A	M5 Cap Screw	6 Nm	4mm wrench
1213T	M5 Cap Screw	10 Nm	4mm wrench
1214T/S, 1221S, 1223T, 1421S	M6 Cap Screw	10 Nm	5mm wrench
1201T/S, 1202T/S, 1203T/S, 1204T/S, 1205T, 1211T/S, 1212T, 1212S, 1212MS, 1213T, 1216T/S, 1218T/S, 1219T, 1228T/S, 1229T/S, 1241T, 1252T/S, 1256T/S, 1261T/S, 1262T/S, 1263T/S, 1264T/S, 1702T, 1703T, 1704T, 1705T, 1751T	M8 Set Screw (Alignment Adjustment Screw)	15 Nm	4mm wrench
1211A, 1211A-OP, 1212A	M8 Set Screw (Alignemnt Adjustment Screw)	10 Nm	4mm wrench
1214T/S, 1217T/S, 1227T, 1218T/S	M6 Flat Head Screw (Mount Screw)	10 Nm	4mm wrench
1231T/S/A	M10 Cap Screw (Attachment Bolt)	30 Nm	8mm wrench
5212T	M6 Cap Screw	10 Nm	5mm wrench
5212T	M10 Set Screw (Alignment Adjustment Screw)	20 Nm	5mm wrench
1321/L1321, 1322/1323, 1324/1326/1319, 1320/1341, 1332A	M6 Cap Screw (Tube Clamp Torque Setting)	12 Nm	5mm wrench
1321/L1321, 1322/1323, 1324/1326	M10 Bolt (Pyramid Center Bolt)	18 Nm	8mm wrench
M0703	M5 Cap Screw	8 Nm	4mm wrench
1313A, 1313A-N	M6 Cap Screw	12 Nm	5mm wrench
P313/P317	M6 Cap Screw	10 Nm	5mm wrench
P212A	M5 Cap Screw	4 Nm	4mm wrench
P212A, P211A	M6 Set Screw (Alignment Adjustment Screw)	10 Nm	3mm wrench
P231A	M8 Cap Screw (Attachment Bolt)	20 Nm	6mm wrench
3010L/3020L	Ratchet & Clutch Pin	4 Nm	7mm spanner

Shoe Size Conversion Chart

Foot Size	Shoe Size	Foot Size	Shoe Size
22 cm	5	26 cm	9
23 cm	6	27 cm	10
24 cm	7	28 cm	11
25 cm	8	29 cm	12

MATERIALS





4011 NSP™

NSP™ - DYNAMIC STIFFNESS WITH 10X THE IMPACT RESISTANCE



NSP™ is a unique fiber that is lighter, stronger, offers ½ the stiffness and 10X the impact resistance than carbon. The stiffness can be regulated by fiber orientation to be equal to carbon. NSP™ can be stiff or flexible depending upon practitioner preference. NSP™ wets out fast because of its high fiber interface and low void content. Translated the resin sticks and air does not get trapped easily.

NSP™ does not create any flying fibers and therefore it ELIMINATES THE ITCH factor which all practitioners and technicians love.

- Provides great fatigue strength for the socket
- Tested in socket form under ISO guidelines for patients up to 500 lbs
- Available in 3, 4, 5, 6, 8 and 10 inch width and 10 and 50 feet length

Result: strong socket that is lighter and more cost effective than carbon fiber socket



We strongly recommend the use of epoxy resins to achieve the best results for strength.

P/N	NSP™
4011-3.10	NSP™ Braid, 3 in x 10 ft
4011-3.50	NSP™ Braid, 3 in x 50 ft
4011-4.10	NSP™ Braid, 4 in x 10 ft
4011-4.50	NSP™ Braid, 4 in x 50 ft
4011-5.10	NSP™ Braid, 5 in x 10 ft
4011-5.50	NSP™ Braid, 5 in x 50 ft
4011-6.10	NSP™ Braid, 6 in x 10 ft
4011-6.50	NSP™ Braid, 6 in x 50 ft
4011-8.10	NSP™ Braid, 8 in x 10 ft
4011-8.50	NSP™ Braid, 8 in x 50 ft
4011-10.10	NSP™ Braid, 10 in x 10 ft
4011-10.50	NSP™ Braid, 10 in x 50 ft
4011-12.10	NSP™ Braid, 12 in x 10 ft
4011-12.50	NSP™ Braid, 12 in x 50 ft



We strongly recommend the use of epoxy resins to achieve the best results for strength.

4116 NSP™ 3D Uni-directional Tape

Designed to provide optimum rigidity in socket fabrication

- Is lighter than carbon tape
- Is stronger than carbon tape
- Offers 10x the impact resistance than carbon tape
- Provides protection for distal end of the socket
- Tested in socket form under ISO guidelines for patients up to 500 lbs



P/N	NSP™ 3D UNI-DIRECTIONAL TAPE
4116-1.25	1" width -25 ft roll
4116-3.25	3" width -25 ft roll



We strongly recommend the use of epoxy resins to achieve the best results for strength.

4111 NSP™ Uni-directional 3K Tape

Designed to enhance longitudinal and brim strength and stiffness

- Provides great fatigue strength for the socket
- Green eco-friendly natural fiber
- Lighter and stronger than carbon tape with half the stiffness
- Offers 10x the impact resistance than carbon tape
- Keeps labs clean due to enhanced fiber saturation
- No itch
- Tested in socket form under ISO guidelines for patients up to 500 lbs





The NSP™ material can create incredible color combinations when using pigment.



Example of split tape to veer around braid/features



Example of loose tie off of braid to Perl or flexastretch (sew end) (Can put Dacron Felt first layer if needed)

NSP™ Fabrication Layup Options

The concept for layups includes tying off and reflecting layers, not cutting to length if possible. We believe layers should be equalized for best results. (Each line represents 1 layer)

BK LAYUP – SINGLE SHOT (UP TO 220 POUNDS) FOR PUCK LOCK TYPE LAMINATION

- Perl or, or flexastretch (sew end) (Can put Dacron Felt first layer if needed)
- NSP Braid (tie to reflect remainder)
- Nyglass (tie off)
- Reflect NSP braid down – at least 1/3 of socket length
- NSP Unidirectional Tape 0-90 and brim circumference (may need to split tape to veer around braid/stockinette)
- Nyglass
- NSP Braid
- Perl or Nylon hose

BK LAYUP – 2 STAGE LAMINATION (UP TO 220 POUNDS)

1st lamination: (Will end up with 1 full and ¼ length NSP braid layup)

- Perl or, or flexastretch (sew end) (Can put Dacron Felt first layer if needed)
- NSP Braid (tie to reflect remainder later)
- Nyglass (tie to reflect remainder later)
- NSP Uni Tape 0-90 and brim circumference (may need to split tape to veer around braid/stockinette)
- Reflect down NSP Braid (25% of length)
- Reflect down Nyglass (scuffing layer for finish lamination)
- Nyglass (scuffing layer for finish lamination – if needed)

2nd lamination: (Final lamination total layup 2 full, ½ and ¼ length)

NSP braid layup inclusive of 1st lamination)

- NSP Braid (50% of length - tie to reflect remainder later)
- Nyglass
- Reflect NSP Braid
- Nylon Hose (or outer finish material/design)

BK LAYUP – SINGLE SHOT (UP TO 375 POUNDS) FOR PUCK LOCK TYPE LAMINATION

- Perl or, or flexastretch (sew end) (Can put Dacron Felt first layer if needed)
- NSP Braid (tie to socket adapter to reflect remainder after nyglass)
- Nyglass (tie to socket adapter)
- Reflect NSP Braid (25% of length)
- Nyglass
- NSP Unidirectional Tape 0-90 and brim circumference (may need to split tape to veer around braid/stockinette)
- Nyglass
- NSP Braid (50% of length tie to socket adapter to reflect down)
- Reflect NSP Braid
- Perl or Nylon hose



BK LAYUP – 2 STAGE LAMINATION (UP TO 375 POUNDS)

1st lamination:

- Perlon, or flexastretch (Sew end) (Can put Dacron Felt first layer if needed)
- NSP Braid (tie to reflect remainder later)
- Nyglass (tie to reflect remainder later)
- NSP Unidirectional Tape 0-90 and brim circumference (may need to split tape to veer around braid/stockinette)
- Reflect Nyglass
- Reflect NSP Braid (Single layer 50% of length)
- 2 Nyglass (scuffing layers for finish lamination)

2nd lamination:

- NSP Braid (tie to reflect remainder later)
- Nyglass
- NSP Braid
- Nylon Hose

AK LAYUP – SINGLE SHOT (UP TO 220 POUNDS) FOR PUCK LOCK TYPE LAMINATION

- Perlon (Sew end) (Can put Dacron Felt first layer if needed)
- NSP Braid (tie off to be reflected down later)
- Nyglass (tie off to socket adapter to be reflected down later)
- NSP Tape for struts and brim
- Reflect Nyglass
- Reflect NSP Braid (50% of length)
- NSP Braid (tie to socket adapter and include enough to reflect 1/3 of length of socket)
- Nyglass (tie to socket adapter)
- Reflect the 1/3 length of NSP Braid.
- Nylon hose

AK LAYUP – 2 STAGE LAMINATION (UP TO 220 POUNDS)

1st lamination:

- Perlon, or flexastretch (Can put Dacron Felt first layer if needed)
- NSP Braid (tie to reflect remainder later)
- Nyglass (tie to reflect remainder later)
- NSP Unidirectional Tape 0-90 and brim circumference
- Reflect Nyglass
- Reflect NSP Braid (30% of length)
- 2 Nyglass (scuffing layers for finish lamination)

2nd lamination:

- NSP Braid (50% of socket length tie to reflect down later)
- Nyglass
- NSP Braid
- Nylon Hose

AK LAYUP – SINGLE SHOT (UP TO 375 POUNDS) FOR PUCK LOCK TYPE LAMINATION

- Perlon (Sew end) (Can put Dacron Felt first layer if needed)
- NSP Braid (tied off to be reflected back down later)
- Nyglass (tie to reflect remainder)
- NSP Unidirectional Tape 0-90 and brim circumference (may need to split tape to veer around braid/stockinette)
- Reflect Nyglass
- NSP Braid (80% of length, tie to reflect remainder)
- Nyglass
- Reflect NSP Braid
- Nylon hose

AK LAYUP – 2 STAGE LAMINATION (UP TO 375 POUNDS)

1st lamination:

- Perlon, or flexastretch (Can put Dacron Felt first layer if needed)
- NSP Braid (tie to reflect remainder later)
- Nyglass (tie to reflect remainder later)
- NSP Unidirectional Tape 0-90 and brim circumference (if needed) (may need to split tape to veer around braid/stockinette)
- Reflect Nyglass
- Reflect NSP Braid (30% of length)
- NSP Braid
- 2 Nyglass (scuffing layers for finish lamination)

2nd lamination:

- NSP Braid (75% of socket length tie to reflect down)
- Nyglass (tie to reflect remainder)
- NSP Braid (50% of socket length Single layer)
- Reflect NSP Braid
- Nylon Hose



These recipes are recommendations. This will help to get familiarized with NSP characteristics. The concept of equalized layers should be utilized when altering layup dependent on patient characteristics (weight/activity)

Ultra6 Carbon Braid



4019

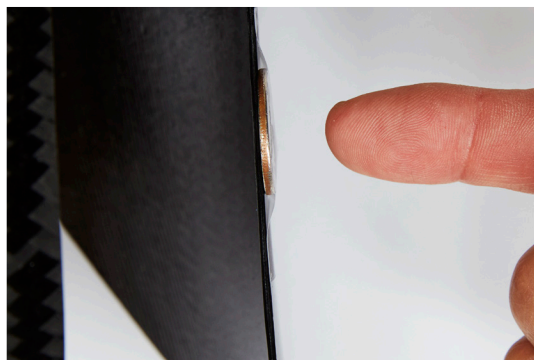
ULTRA6 CARBON BRAID

For smooth, conforming, light and strong lamination

- Thinner and lighter without sacrificing strength
- Conforms and wets out better with resin
- Cost comparable to regular carbon

P/N	Description
4019-3.10	ULTRA 6 CARBON, 3in x 10ft
4019-3.50	ULTRA 6 CARBON, 3in x 50ft
4019-4.10	ULTRA 6 CARBON, 4in x 10ft
4019-4.50	ULTRA 6 CARBON, 4in x 50ft
4019-5.10	ULTRA 6 CARBON, 5in x 10ft
4019-5.50	ULTRA 6 CARBON, 5in x 50ft
4019-6.10	ULTRA 6 CARBON, 6in x 10ft
4019-6.50	ULTRA 6 CARBON, 6in x 50ft
4019-8.10	ULTRA 6 CARBON, 8in x 10ft
4019-8.50	ULTRA 6 CARBON, 8in x 50ft
4019-10.10	ULTRA 6 CARBON, 10in x 10ft
4019-10.50	ULTRA 6 CARBON, 10in x 50ft

We strongly recommend the use of epoxy resins to achieve the best results for strength.



Thinner than a coin



Carbon Braid



4016 CARBON BRAID

- 12K strand count
- Designed for improved polyester and fiber interface
- Decreased fraying (less dust)

P/N	Description
4016-3.10	CARBON BRAID, 3in x 10ft
4016-3.50	CARBON BRAID, 3in x 50ft
4016-4.10	CARBON BRAID, 4in x 10ft
4016-4.50	CARBON BRAID, 4in x 50ft
4016-5.10	CARBON BRAID, 5in x 10ft
4016-5.50	CARBON BRAID, 5in x 50ft
4016-6.10	CARBON BRAID, 6in x 10ft
4016-6.50	CARBON BRAID, 6in x 50ft
4016-8.10	CARBON BRAID, 8in x 10ft
4016-8.50	CARBON BRAID, 8in x 50ft
4016-10.10	CARBON BRAID, 10in x 10ft
4016-10.50	CARBON BRAID, 10in x 50ft

We strongly recommend the use of epoxy resins to achieve the best results for strength.

4018 ULTRA6 CARBON TAPE

New lighter weight uni-directional carbon tape for optimum strength



P/N	Description
4018-1 30	ULTRA 6 CARBON TAPE, 1in x 30ft
4018-3 30	ULTRA 6 CARBON TAPE, 3in x 30ft
4018-3 100	ULTRA 6 CARBON TAPE, 3in x 100ft

C-Form



4013

C-FORM CONFORMING CAST TAPE

The closest you will come to "Plaster" in a Synthetic Cast Tape

- Conforms nicely to complex shapes
- Allows for the practitioner to produce a more conforming cast
- No plaster mess
- Ample time to work with before it hardens
- No need for special glove, a regular casting glove is fine to use
- Resin does not stick to the glove like typical fiber glass casting tape
- Very rigid cast once finished
- Cost effective (based on comparable conforming casting tapes)

P/N	Description
4013-2	C-Form Casting Tape - White W 2in x L 4yd (box=10 rolls)
4013-3	C-Form Casting Tape - White W 3in x L 4yd (box=10 rolls)
4013-4	C-Form Casting Tape - White W 4in x L 4yd (box=10 rolls)
4013-5	C-Form Casting Tape - White W 5in x L 4yd (box=10 rolls)





C-Form



AK



AFO

4022

C-FORM CONFORMING SCANNING SLEEVE

The closest you will come to "Plaster" in a Synthetic Cast Tube

- Finished cast is excellent for digital scanning on the outer surface of the C-Form Tube with no overlapping wraps as with casting tape.
- Conforms nicely to complex shapes.
- Allows for the practitioner to produce a more conforming cast
- No plaster mess
- Ample time to work with before it hardens
- Cost effective (based on comparable conforming casting tubes)
- Comes in 2, 3, 4, 5 inch widths, in 20" (50cm) and 28" (70cm) lengths

Size Reference

(Circ. Range 7.5"/19cm to 14.5"/36cm)

4022-2.20 - Pediatric AFO (up to petite child), Upper, Ped/small child BK

4022-2.28 - Small child AFO

(Circ. Range 9"/29cm to 19.5"/49.5cm)

4022-3.20 - BK (medium/large adult), lower KAFO section (average adult)

4022-3.28 - AFO (child to average adult), Small AK

(Circ. Range 14.5"/37cm to 27"/68cm)

4022-4.20 - BK (large to extra large adult), KAFO Calf section (very large adult)

4022-4.28 - AFO (very large adult), medium to large AK, KAFO thigh section (average adult)

(Circ. Range 19"/48cm to 35"/89cm)

4022-5.20 - KAFO (thigh section very large adult)

4022-5.28 - AK (medium/large to XL adult)

P/N	Description
4022-2.20	C-Form Tube – 2" x 20" (50cm)
4022-2.28	C-Form Tube – 2" x 28" (70cm)
4022-3.20	C-Form Tube – 3" x 20" (50cm)
4022-3.28	C-Form Tube – 3" x 28" (70cm)
4022-4.20	C-Form Tube – 4" x 20" (50cm)
4022-4.28	C-Form Tube – 4" x 28" (70cm)
4022-5.20	C-Form Tube – 5" x 20" (50cm)
4022-5.28	C-Form Tube – 5" x 28" (70cm)

NOTE: The larger the circumference, the shorter the resulting length will be.

Tip #1: Frequently shape the cast to fit the patient with wet gloves for best results.

Tip #2: Doff-N-Donner can greatly improve capture of detail around the ankle/hind foot.

Tip #3: C-Form tube should fully cure prior to cutting off to reduce collapsing.

Tip #4: Use THE EZ CUTTER or a sharp pair of scissors when removing the cast and cut in the channel that was wrapped into the plastic.

Tip #5: Use more water than you think you need to reduce bubbling and tackiness.

Environment:

Storage Temperature Range: Between temperatures of -10°C to 50°C (14°F and 122°F)

Do not store in wet environment.

R-Form



4015

R-FORM FIBERGLASS CAST TAPE

- Finished cast is strong and durable
- Radiolucent - superb to see through by X-ray
- Available in white only

P/N	Description
4015-2	R-Form Casting Tape, Fiberglass, W 2in x L 4yd, White (box=10 rolls)
4015-3	R-Form Casting Tape, Fiberglass, W 3in x L 4yd, White (box=10 rolls)
4015-4	R-Form Casting Tape, Fiberglass, W 4in x L 4yd, White (box=10 rolls)
4015-5	R-Form Casting Tape, Fiberglass, W 5in x L 4yd, White (box=10 rolls)



4040

EZ CUTTER KNIFE

Designed for cutting C-FORM & R-FORM

- The safest utility cutter on the market today
- Reduce workplace lacerations
- Provides a recessed blade which eliminates injuries
- Perfect for cutting through C-FORM AFO Casts
- CUT AT A SLIGHT ANGLE

P/N	Description
4040-st	EZ CUTTER - Standard
4040-sm	EZ CUTTER - Small



Uni-Grip



4030 UNI-GRIP

This unique fabric sheet with pressure sensitive adhesive back provides versatile application for prosthetic and orthotic needs. UNI-GRIP's biased direction texture provides grip in one direction while providing free glide in the other direction.

Some of the possible applications:

- Restrict rotation of stump in AK socket
- Suspension for BK and AK socket
- Prevent pistoning of the stump in the socket
- Restrict migration of orthotics

P/N	Description
4030-1	Uni-Grip, 1 sheet of 8 strips



Uni-Grip vertically placed
creates suspension



Uni-Grip horizontally placed
eliminates rotation



Standard PVA Bags

- PVA bags 40 inches long
- Available in 4-20 inch sleeves
- Open ended

P/N	Description	# of PVA bags per package
4050-4	PVA Bag 40" x 4"	20
4050-6	PVA Bag 40" x 6"	20
4050-8	PVA Bag 40" x 8"	20
4050-10	PVA Bag 40" x 10"	20
4050-12	PVA Bag 40" x 12"	20
4050-14	PVA Bag 40" x 14"	20
4050-16	PVA Bag 40" x 16"	20
4050-20	PVA Bag 40" x 20"	10

ORTHOTICS





RIDGEFLEX Ankle Joint

RIDGEFLEX
NO STRINGS ATTACHED

RFD-100 & RFS-100

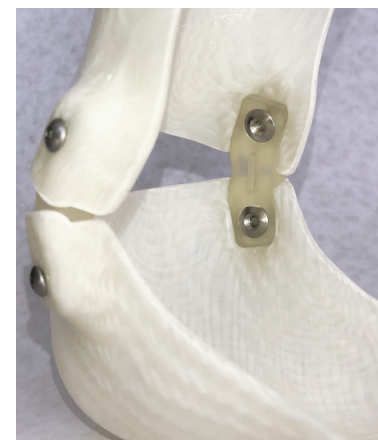
RIDGEFLEX ANKLE JOINT

Continuous Fiber Elastomer Technology - CFET



Features:

- The RidgeFlex Ankle Joint represents optimal balance between flexibility and rigidity due to the utilization of a proprietary material called Prepalon®.
- Prepalon® is a continuous fiber and elastomer blend technology (CFET).
- The use of flexible elastomer provides optimum tear strength, preventing fatigue failure
- Continuous fiber blended within the elastomer provides structure and rigidity, preventing the joint from stretching.
- This technology eliminates the need for strings which do not provide any support in rotation or A-P movement.
- Material technology allows for bold concepts which led to the creation of the tendon design. The tendon design offers a smooth movement while providing proper support in the sagittal plane and rotational control.
- Combination of flexible elastomer and continuous fiber blend for rigidity allows for optimum balance of smooth movement and rigid support.
- No need to compromise the tear strength by using a higher density elastomer for more support. Higher density in elastomer means weaker tear strength, thus compromising the structural integrity of the joint.

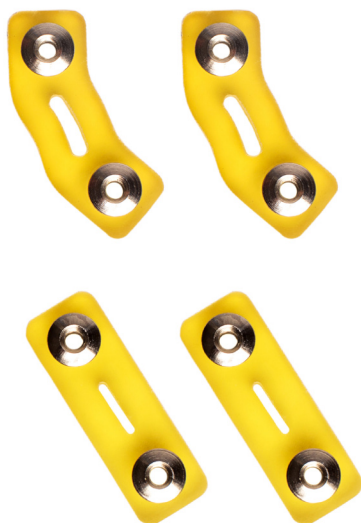


Continuous Fiber Elastomer Technology - CFET

Continuous fiber blended within the elastomer provides optimum tear strength, structure and rigidity, preventing fatigue and failure.

AFO ANKLE JOINTS

RIDGEFLEX Ankle Joint



P/N	Description
RFD-100	RidgeFlex Ankle Joint, Dorsi Assist

P/N	Description
RFS-100	RidgeFlex Ankle Joint, Standard



P/N	Description
RFS-100-DM	RidgeFlex Ankle Joint, Dummy

Pediatric RIDGEFLEX Ankle Joint



P/N	Description
PRFD-200	Pediatric RidgeFlex Ankle Joint, Dorsi Assist

P/N	Description
PFRS-200	Pediatric RidgeFlex Ankle Joint, Standard



P/N	Description
PFRS-200DM	Pediatric RidgeFlex Ankle Joint, Dummy

TO ORDER CALL: 714-524-0663 • FAX: 714-364-8113 • EMAIL: orders@stngco.com



Ankle Joint



Ankle Joint

MAJ-100
MERIDIAN ANKLE JOINT

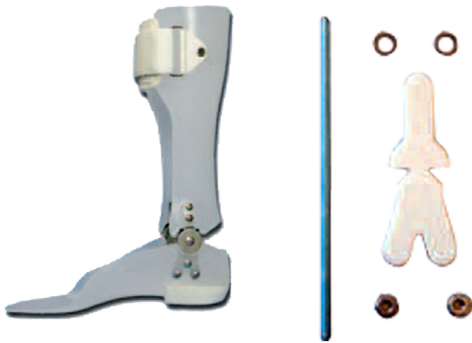
The Meridian ankle joint is a durable stainless steel ankle joint. Its sleek and low profile design allows for a light weight and durable ankle joint, which can be set in infinite degrees of motion, without the inconvenience of changing parts. This joint allows precise degree fine tuning and has the ability to lock in any degree of plantar/dorsi-flexion. Some uses for the Meridian Ankle Joint include articulating AFO's, contracture management, solid ankle AFO's, posterior entry AFO's, tone reducing AFO's and floor reaction AFO's.

Suggested L-Codes:

- **L2200** (Limited motion ankle joint x 2)

Note: The above codes are suggested codes and accurate coding lies solely with the provider treating the patient.

Warranty: 6 months



Fabrication Kit

P/N	Description	Unit
MAJ-100P	Pediatric Meridian Ankle Joint	Pair
MAJ-100A	Adult Meridian Ankle Joint	Pair
MAJ-100HD	HD Meridian Ankle Joint	Pair
MAJ-KIT-P	Fabrication Kit, Peiatric	Kit
MAJ-KIT-A	Fabrication Kit, Adult	Kit
MAJ-KIT-HD	Fabrication Kit, Heavy Duty	Kit

AFO ANKLE JOINTS

In Step Carbon AFO



In Step Carbon AFO

Designed for natural gait response.

The IN STEP AFO provides a smooth roll-over that results in a more natural gait. Unique spiral design offers a wide plantar and dorsiflexion range with dynamic response.

The material matrix provides an extremely durable and lightweight design combination. Spiral design of strut offers comfortable feel and security. The low-profile aspect fits inside almost any shoe.

Calf band allows for an easy application while securely keeping the IN STEP AFO in place.

Weight limit is 220lbs.

INDICATIONS:

IN STEP is ideal for patients with drop foot dorsiflexor paresis/paralysis, peroneal nerve palsy or CVA. IN STEP will provide greater support for moderate to severe drop foot.

Warranty: 6 months

PDAC approved HCPCS code(s): L1951

- To download PDAC Letter please visit our website at www.stngco.com

P/N	Description	Sizing
AF-100S/L	Left-Small (Mens 5-6 / Womens 6-8.5)	25 cm
AF-100S/R	Right-Small (Mens 5-6 / Womens 6-8.5)	25 cm
AF-100M/L	Left-Medium (Mens 6-9 / Womens 8.5-10)	27 cm
AF-100M/R	Right-Medium (Mens 6-9 / Womens 8.5-10)	27 cm
AF-100L/L	Left-Large (Mens 9-12 / Womens 10-13)	29 cm
AF-100L/R	Right-Large (Mens 9-12 / Womens 10-13)	29 cm

In Step Replacement Sleeve	Size
AF-ST-L - In STeo AFO Cuff Strao, Left	LEFT
AF-ST-R - In STeo AFO Cuff Strao, Right	RIGHT



In Step Carbon AFO - Anterior



In Step Carbon AFO - Anterior

Designed for ankle control with needed mild knee stability

The IN STEP Anterior AFO is designed to increase ankle and knee stability when there is mild knee/ankle weakness. The contoured footplate allows for smooth roll over, yet enhances knee stability. This design can be utilized with a custom foot orthosis for increased control.

The material matrix provides a durable and lightweight design, while the included tibial pad increases comfort. Lateral strut offers a low-profile aspect that fits inside almost any shoe.

IN STEP Anterior AFO is designed with a comfortable and easy application anterior shell design.

Weight limit is 220lbs.

INDICATIONS:

IN STEP is ideal for patients with Foot Drop, or neurologic conditions such as stroke, multiple sclerosis, trauma, injury or other conditions that result in weak ankle dorsiflexion function with the need for mild knee stability. Not indicated for severe spasticity, need for high degree of knee stability, very poor body awareness, poor balance, or contracture management.

Warranty: 6 months

Suggested L-Codes:

- **L1932**

Note: The above codes are suggested codes and accurate coding lies solely with the provider treating the patient.



P/N	Description	Sizing
AF-300S/L	Left-Small (Mens 5-6 / Womens 6-8.5)	21 cm
AF-300S/R	Right-Small (Mens 5-6 / Womens 6-8.5)	21 cm
AF-300M/L	Left-Medium (Mens 6-9 / Womens 8.5-10)	22 cm
AF-300M/R	Right-Medium (Mens 6-9 / Womens 8.5-10)	22 cm
AF-300L/L	Left-Large (Mens 9-12 / Womens 10-13)	25 cm
AF-300L/R	Right-Large (Mens 9-12 / Womens 10-13)	25 cm

In Step Replacement Sleeve	Size
AF-ST-L - In STeo AFO Cuff Strao, Left	LEFT
AF-ST-R - In STeo AFO Cuff Strao, Right	RIGHT

SPINAL ORTHOTICS

LSO



The Balboa Comfort LSO Brace provides superior 5 : 1 compression and stabilization from L-1 to below L-5 vertebra

TIPS:

- Extend or pull the brace completely out prior to application.
- Initially align each pulley handle to the side of the brace prior to fitting.
- Adjust tension for sitting or standing.
- Hand wash in warm water, rinse well, towel and air dry completely.

** Medical advice should be sought on the appropriateness and the condition under which any given spinal bracing system should be utilized.*

LS-627

BALBOA COMFORT LSO BRACE

LS-627A Standard – S thru XL

(25" – 45" circumference, 9 1/2" height back panel)

LS-627B Maximum – 2XL thru 4XL

(45" – 60" circumference, 9 1/2" height back panel)

The NEW Balboa Comfort LSO is a universal lumbar orthosis which provides sagittal control from an anterior and posterior rigid panel. The Balboa Comfort LSO has a flexible pulley system which allows for maximum comfort and fit. A dual handle pulley system allows for the patient to receive equalized compression throughout the brace.

Warranty: 90 days

Indications include but are not limited to:

- Low back pain, sprains and strains, and scoliosis
- Lumbar disc displacement, disc degeneration, disc herniation, and compression fractures
- Post-operative laminectomy, post-operative discectomy, IDET procedure, spondylolisthesis, post-operative fusion, spinal stenosis, and osteoporosis



- Removable rigid posterior panel extends from L-1 to below L-5 vertebra offering equalized compression and support
- Lightweight low profile rigid anterior panel is built into the belt and provides additional abdominal comfort and support
- Flexible pulley system contours and conforms to the patient's body type which allows the patient to adjust easily for desired comfort when standing or sitting
- Easy to use dual handle pulley helps provide equal compression as well as aids patients with arthritic hand issues and muscle weakness





LSO



The Capri Comfort LSO Brace provides superior 5 : 1 compression and stabilization from the sacroccocygeal junction to T-9 vertebra

LS-631

CAPRI COMFORT LSO BRACE

LS-631 Universal – S thru 4XL (25"–60" circumference)

The NEW Capri Comfort LSO, pre and post operative management bracing system allows for a progression of rehabilitation adaptability with anterior and posterior panels. The Capri Comfort LSO treats a variety of indications from acute and chronic pain to post operative patients, thus assisting the patient through a continuum of care.

Warranty: 90 days

Codes L0631 & L0648 Approved

Indications include but are not limited to:

- Burst fracture
- Facet syndrome
- Chronic and mechanical low back pain
- Post-operative stabilization protocol following: Laminotomy, foraminotomy, IDET procedures, anterior laparoscopic fusion, posterior lateral fusion, and multi-level decompression



- Dual independent mechanical advantage pulley system provides precise upper and lower compression levels for maximum comfort, control, support, stability, and pain relief
- Removable contoured padded posterior panel provides maximum comfort and support when sitting or standing
- Low profile anterior panel is built into the belt for greater patient comfort and compliance
- Easy to use dual independent mechanical advantage pulley handles help with patients who have trouble with arthritic hand issues and muscle weakness

TIPS:

- Extend or pull the brace completely out prior to application.
- Initially align each pulley handle to the side of the brace prior to fitting.
- Adjust tension for sitting or standing.
- Hand wash in warm water, rinse well, towel and air dry completely.

** Medical advice should be sought on the appropriateness and the condition under which any given spinal bracing system should be utilized.*



SPINAL ORTHOTICS

LSO

LS-637

AVALON CONTOUR LSO BRACE

LS-637 Universal – S thru 4XL (25"–60" circumference)

The NEW Avalon Contour LSO, pre and post operative management bracing system allows for a progression of rehabilitation adaptability with anterior and removable lateral and posterior panels. The Avalon Contour LSO treats a variety of indications from acute and chronic pain to post operative patients, thus assisting the patient through a continuum of care.

Warranty: 90 days

Codes L0637 & L0650 Approved

Indications include but are not limited to:

- Lumbar sacral mechanical back pain
- Spinal stenosis
- Spondylolisthesis
- Degenerative and bulging discs
- Herniated/bulging discs
- Facet syndrome
- Post-operative stabilization protocol following: Laminotomy, foraminotomy, IDET procedures, anterior laparoscopic fusion, posterior lateral fusion, and multi-level decompression



The Avalon Contour LSO Brace provides superior 5 : 1 compression and stabilization from the sacroccocygeal junction to T-9 vertebra



- Dual independent mechanical advantage pulley system provides precise upper and lower compression levels for maximum comfort, control, support, stability, and pain relief
- Removable contoured padded posterior and lateral panels provides maximum comfort and support when sitting or standing
- Low profile anterior panel is built into the belt for greater patient comfort and compliance
- Easy to use dual independent mechanical advantage pulley handles help with patients who have trouble with arthritic hand issues and muscle weakness

TIPS:

- Extend or pull the brace completely out prior to application.
- Initially align each pulley handle to the side of the brace prior to fitting.
- Adjust tension for sitting or standing.
- Hand wash in warm water, rinse well, towel and air dry completely.

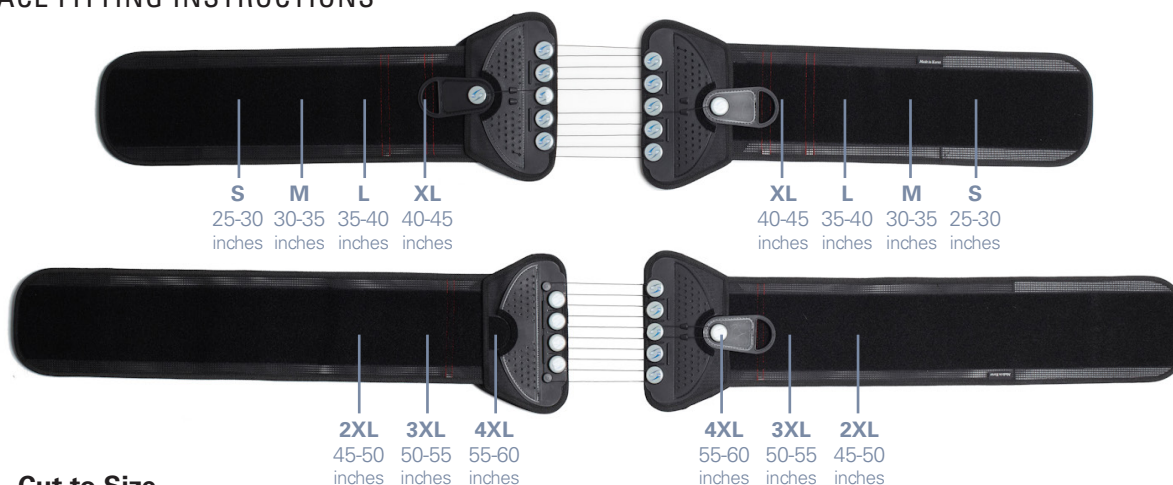
** Medical advice should be sought on the appropriateness and the condition under which any given spinal bracing system should be utilized.*



TO ORDER CALL: 714-524-0663 • FAX: 714-364-8113 • EMAIL: orders@stngco.com

LSO

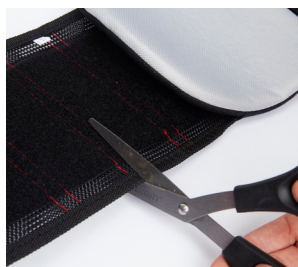
LSO BRACE FITTING INSTRUCTIONS



STEP 2 - Cut to Size



Lift sleeve and remove extension panels to adjust to appropriate size.



Cut to desired length with scissors (prior to cutting, refer to sizing chart for proper length).



If size adjustment is minimal, simply fold the extension panel to desired length.



Once adjustment is made, (cut or folded) simply lift the sleeve and attach the extension to Velcro. Press down to secure.

STEP 3 - Fit to Size



Initially align each pulley handle to the side of the brace prior to fitting. Adjust tension for sitting or standing.



Center back panel on the spine with the pointed part of the posterior panel up.



Wrap the left side to the front, positioning the front panel. Then wrap right side on top of the left panel to close and attach in front.



Pull each side pulley at the same time out and away to desired compression and support.



Place the handles on the fabric for a secure fit.

To Shorten the Length of the Nylon Cord on the Pulley Handle:



Detach the cord from the front clip



Wrap the cord around the 360-degree side groove clockwise



Reattach the cord to the front clip



Tools



RT-100 RATCHETING BUCKLE

Ratcheting buckle can be used as straps in any orthotic application. The ratchet design makes it easy for the patient to don the brace with little effort and the quick release enables the patient to doff the brace easily as well.

P/N	Description
RT-100-B	Ratcheting Buckle, Black



DS-100 DIAL LOCK STRAP SYSTEM WITH HOOK AND LOOP

- Prefabricated, durable, and installs in minutes
- Adjustable hook and loop closure
- 1.5" / 38mm width
- 100mm (4") of adjustable travel
- Usable strap length:
- Max: 540mm (21.25") / Min: 438mm (17.25")
- Cut to size



DS-200 DIAL LOCK STRAP SYSTEM WITH MAGNETIC BUCKLE

- Prefabricated, durable, and installs in minutes
- Self Locating and Locking Magnetic Buckle
- Adjustable hook and loop closure
- 1.5" / 38mm width
- 100mm (4") of adjustable travel
- Usable strap length:
- Max: 550mm (21.63") / Min: 450mm (17.63")
- Cut to size
- Magnetic buckle rated to 80kg (198lb)



*"They did not know it was impossible,
so they did it"*

— MARK TWAIN

INNOVATION WITHOUT LIMITS



2691 Saturn Street
Brea, California 92821, USA
T (1) 714-524-0663 **F** (1) 714-364-8113
E info@stngco.com

stngco.com